

QoE in ICN Discussion

IETF 91 - ICNRG

Damien Saucez

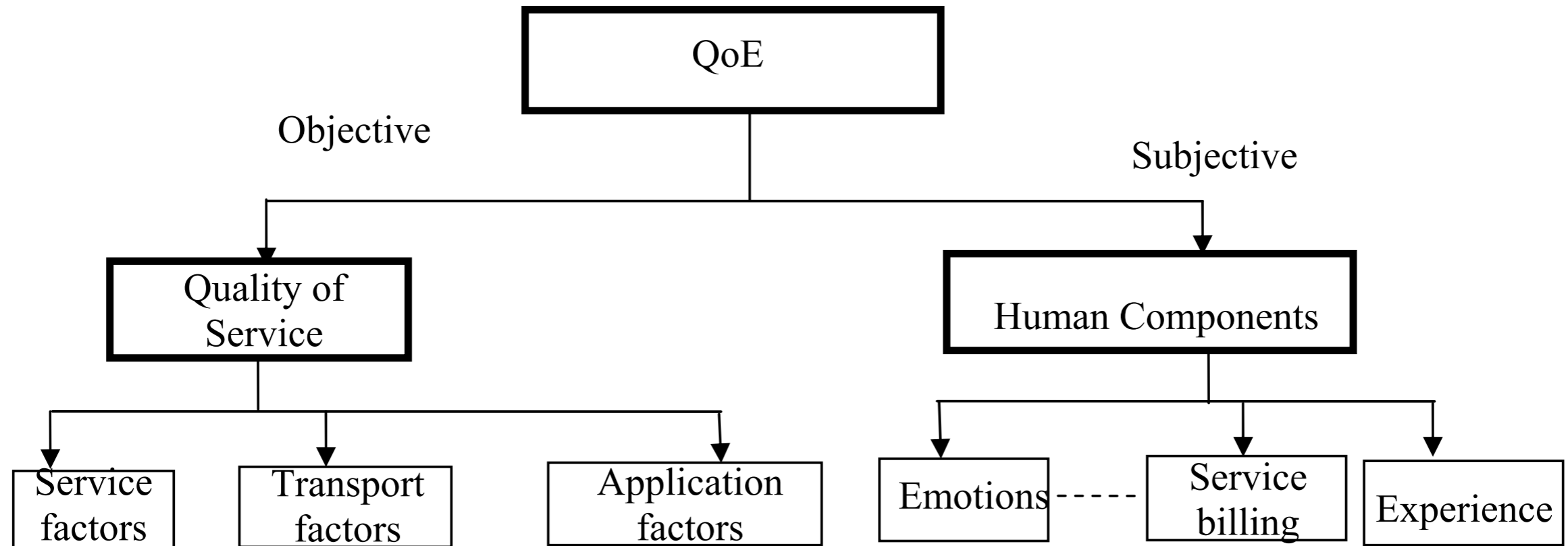
What to discuss about?

- For a given infrastructure, would the **QoE** be better, equal, or worth with ICN than without ICN?

Quality of Experience (QoE)

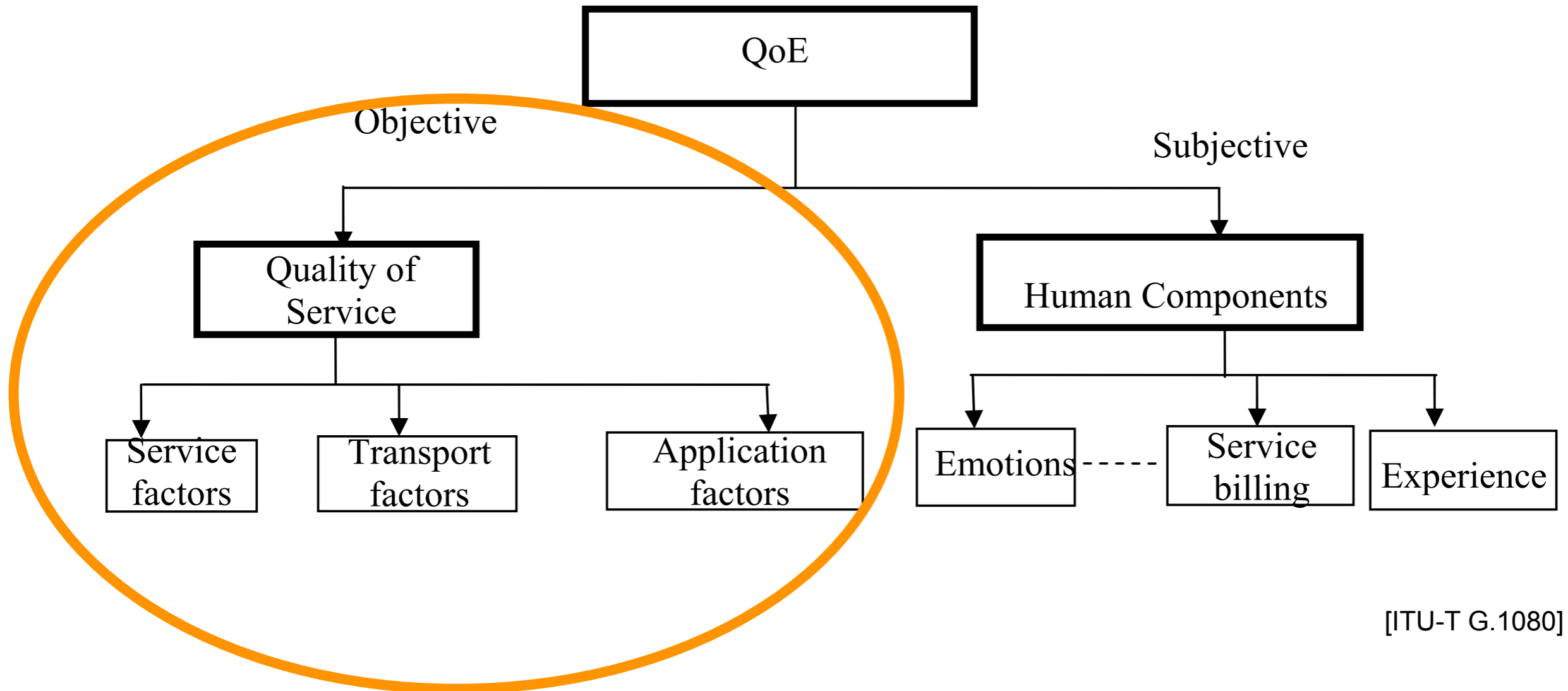
- The overall acceptability of an application or service, as perceived subjectively by the end-user.

What does QoE depend on?



[ITU-T G.1080]

What does QoE depend on?



[ITU-T G.1080]

Service factor

- How to properly design caching strategies and routing in ICN context to preserve or improve QoE?
- e.g., changing path from one chunk to another may cause variability

Transport factor

- How to properly design transport mechanisms (e.g., congestion control) in ICN context to preserve or improve QoE?
- e.g., caching may negatively impact completion time of the least popular contents

Application factor

- How to properly design applications in ICN context to preserve or improve QoE?
- e.g., buffering strategies in Video

QoE in ICN Discussion

IETF 91 - ICNRG

Damien Saucez

Quality of Service (QoS)

- Quality of service involves the totality of characteristics of a telecommunication service that bear on its ability to satisfy stated and implied needs of the user of the service.

[ITU-T E.800]