

Multi-chassis PON Protection in MPLS

draft-jiang-pwe3-mc-pon-03

Yuanlong Jiang, Yong Luo, Huawei

Edwin Mallette, Bright House Networks

Chengbin Shen, China Telecom

Yimin Shen, Juniper

Weiqiang Cheng, China Mobile

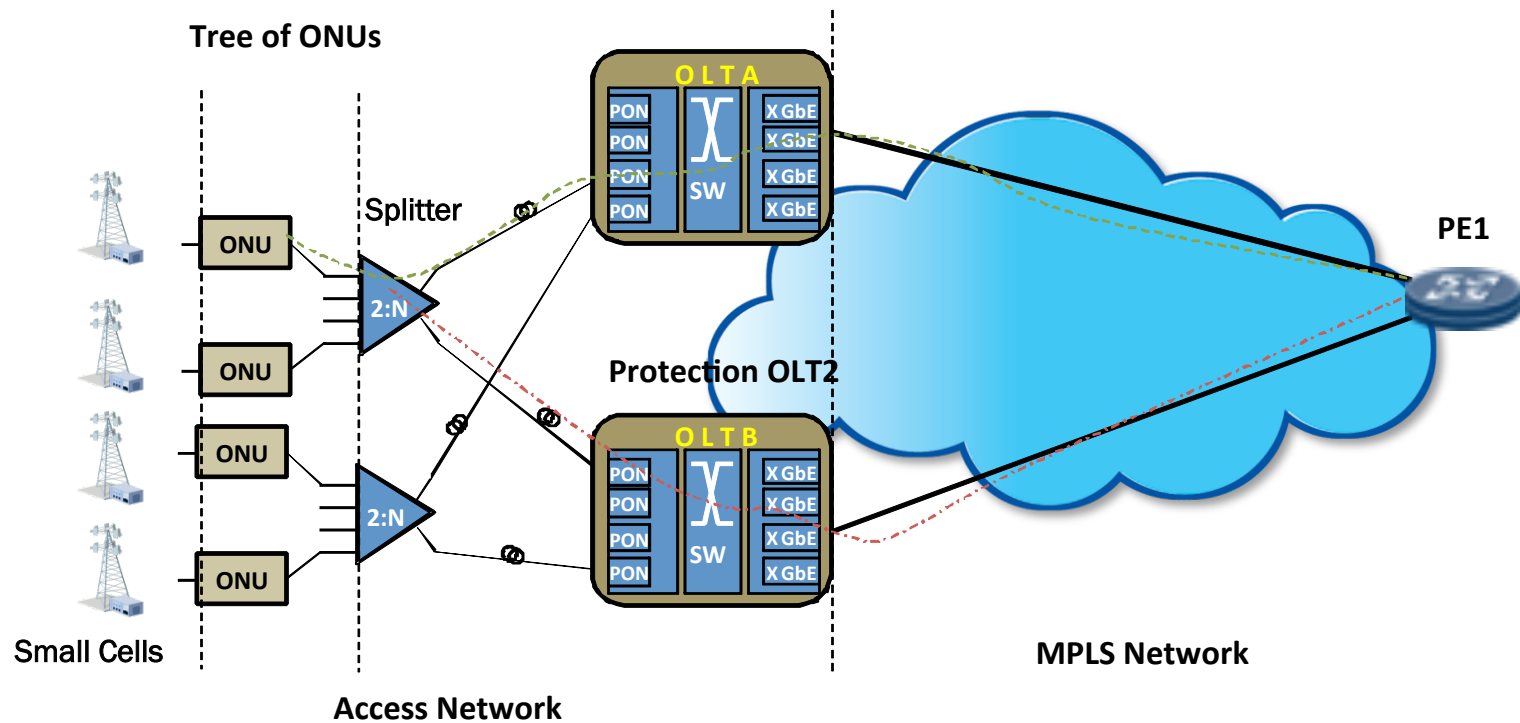
Guangtao Zhou, China Unicom

Overview

- Basically, this document provides multi-chassis support for *PON* access
- Unique characteristic of PON trunk protection
 - In trunk protection, downstream optical signal is not available on the protection link
 - End to end protection mechanisms such as ITU-T G. 8031 does not work as APS protocol runs on the protection path
- Extend ICCP to support synchronization of PON state and use PW redundancy to synchronize PW switchover

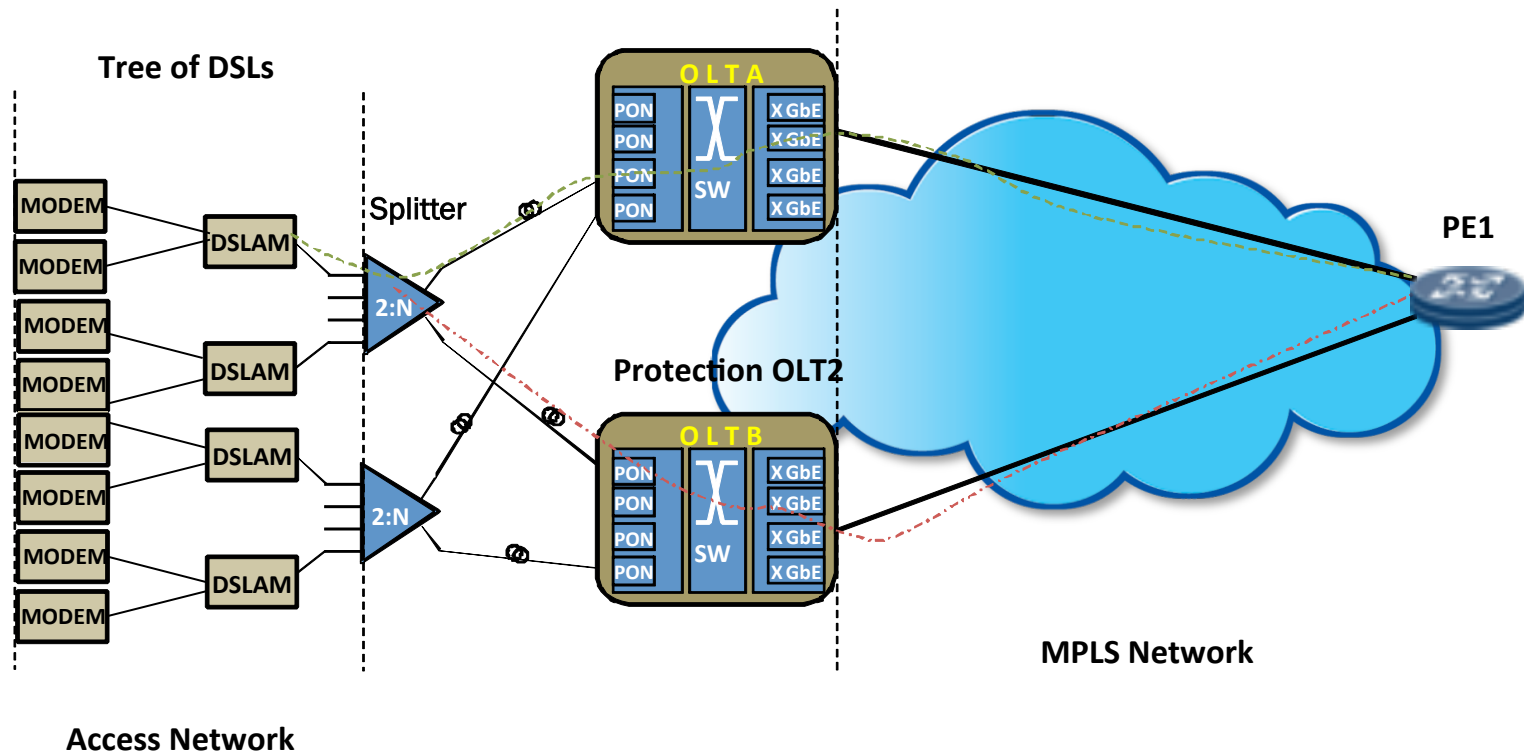
Protection of a tree of ONUs

- Trunk protection can protect a tree of ONUs with scalability



Protection of a tree of DSL

- DSL tree builds on existing subscriber lines
- PON further provides a section of aggregation
- Trunk protection can protect a tree of DSLs with scalability



Comments & questions on V.02

- Any deployment of Type-B PON protection?
 - Yes, we see quite a few real deployments of type-B PON protection in carrier networks around the world, and many more SPs have shown their interests in its future deployment.

- Like to see more access technologies are covered, such as DSL and Ethernet
 - For the moment, we focused on PON since it is the immediately needed, but contributions on other access technologies are greatly welcome.

Updates in V.03

- New co-authors are added
 - Weiqiang Cheng from China Mobile, and
 - Guangtao Zhou from China Unicom
- Added clarifications on the usage of PON Configuration TLV
- Added clarifications on the usage of PON State TLV

Next Step

- Can this be accepted as a WG item?

Thank You