

PCE Path Profiles

[draft-alvarez-pce-path-profiles](#)

Santiago Alvarez (saalvare@cisco.com)

Siva Sivabalan (msiva@cisco.com)

Zafar Ali (zali@cisco.com)

Luis Tomotaki (luis.tomotaki@verizon.com)

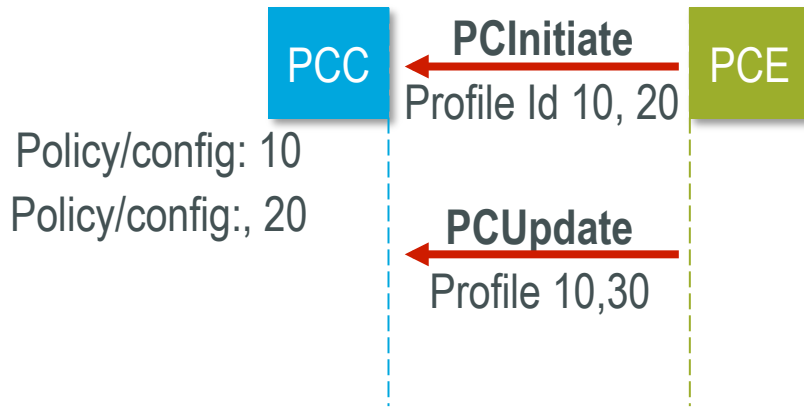
Victor Lopez (vlopez@tid.es)

Rob Shakir (rob.shakir@bt.com) - Presenter

Jeff Tantsura (Jeff.Tantsura@ericsson.com)

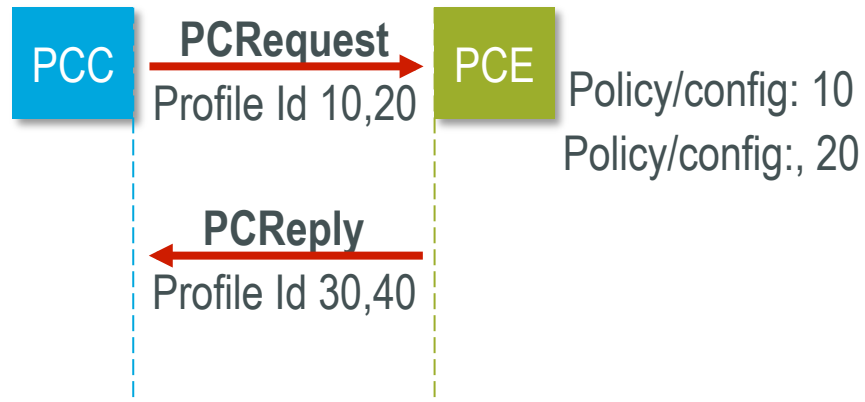
Recap

PCE-Initiated LSP



- A PCEP peer may signal one or more profile identifiers to invoke a parameter or policy on receiving peer
- Profile ids are opaque tags defined and administered by operator

PCC-Initiated LSP



Changes in *-02

- Added extension to PCReq message for point-to-multipoint paths
- Specified processing order for multiple profile ids
- Additional error to signal incompatibility between profile ids signaled simultaneously

```
<PCReq Message> ::= <Common Header>
                    <request>

where:

    <request> ::= <RP>
                 <end-point-rro-pair-list>
                 [<PATH-PROFILE>]
                 [<OF>]
                 [<LSPA>]
                 [<BANDWIDTH>]
                 [<metric-list>]
                 [<IRO>]
                 [<LOAD-BALANCING>]

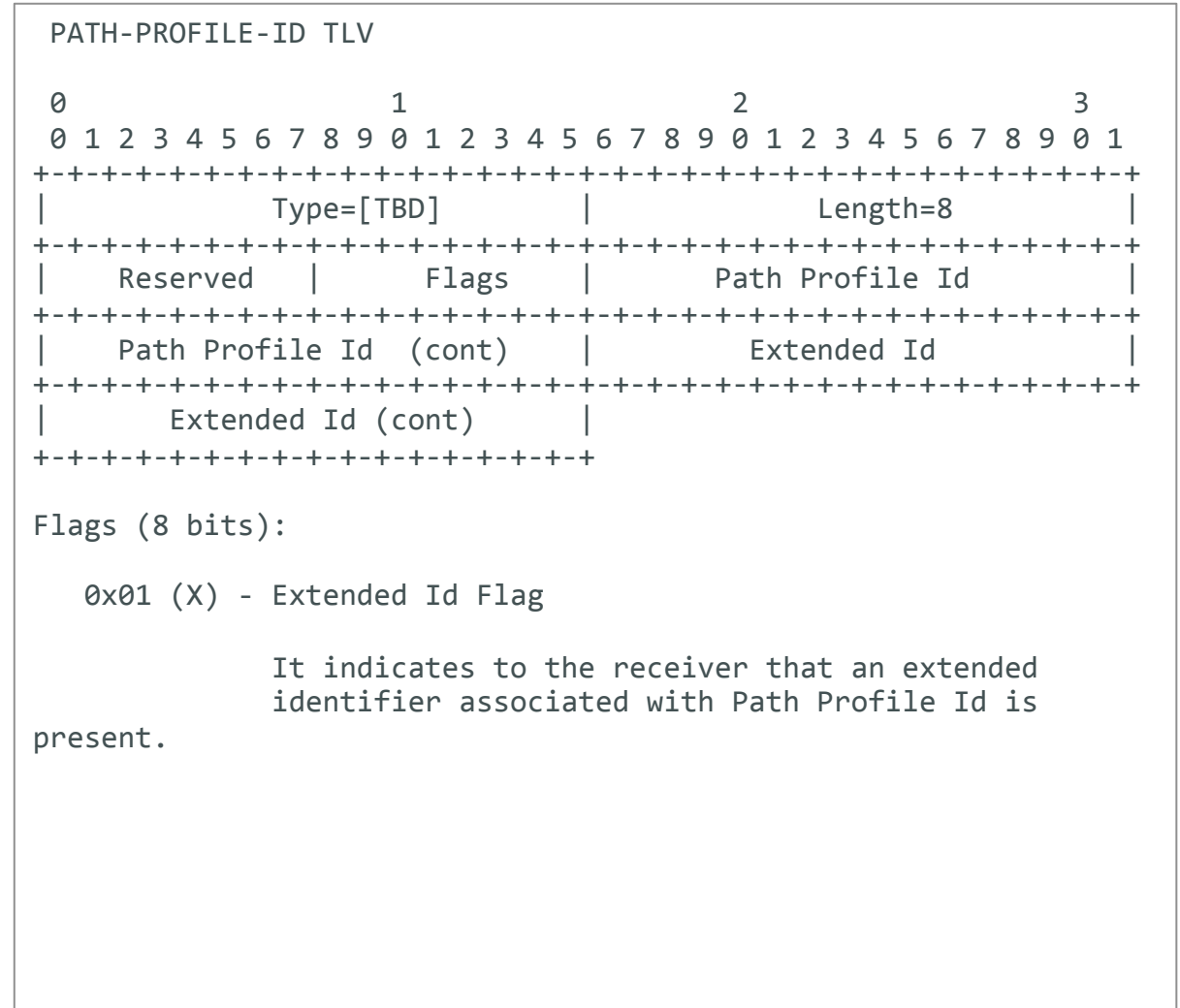
where:

    <end-point-rro-pair-list> ::=
        <END-POINTS> [<RRO-List>] [<BANDWIDTH>]
        [<end-point-rro-pair-list>]

    <RRO-List> ::= <RRO> [<BANDWIDTH>] [<RRO-List>]
    <metric-list> ::= <METRIC> [<metric-list>]
```

Changes in *-03

- Specified optional extended id
- Profile id and extended id may be interpreted as
 - Larger single identifier
 - Two level hierarchy
- Use of extended id is a local decision defined by operator



Next Steps

- Expand introduction and motivation (already in rev -04 recently published)
- Add extensions for PCE-Initiated point-to-multipoint paths
- Incorporate WG feedback
- WG adoption

Thank you!