

RADIUS Extensions for IPv4-Embedded Multicast and Unicast IPv6 Prefixes

draft-hu-softwire-multicast-radius-ext-06

IETF 91-Honolulu, November 2014

Q. Wang, W. Meng, C. Wang & M. Boucadair

Draft Status Quo

Primary documents	DHCP Option	Radius Attribute
RFC6333 (draft-ietf-softwire-dual-stack-lite)	RFC6334 (draft-ietf-softwire-ds-lite-tunnel-option)	RFC6519 (draft-ietf-softwire-ds-lite-radius-ext)
draft-ietf-softwire-map	Draft-ietf-softwire-map-dhcp	Draft-ietf-softwire-map-radius
RFC5969 (draft-ietf-softwire-ipv6-6rd)	RFC5969 Section 7.1.1	RFC6930 (draft-ietf-softwire-6rd-radius-attrib)
draft-ietf-softwire-dslite-multicast& Draft-ietf-softwire-mesh-multicast	Draft-ietf-softwire-multicast-prefix-option (Waiting for WG Chair Go-Ahead)	Draft-hu-softwire-multicast-radius-ext

Scope & Context

- Defines a RADIUS attribute to convey Multicast-Prefixes-64 to NAS, then NAS uses it as DHCPv6 OPTION_v6_PREFIX64 Option to the requested DHCP Client.
 - I-D. ietf-softwire-multicast-prefix-option
- Multicast Counterpart of DS-Lite Unicast RADIUS extension defined in [[RFC6519](#)] .
- This attribute can be used in various contexts
 - multicast DS-Lite
 - multicast MAP-E/MAP-T/LW4o6
 - Other IPv4-IPv6 multicast interconnection/interworking techniques

Message Flow

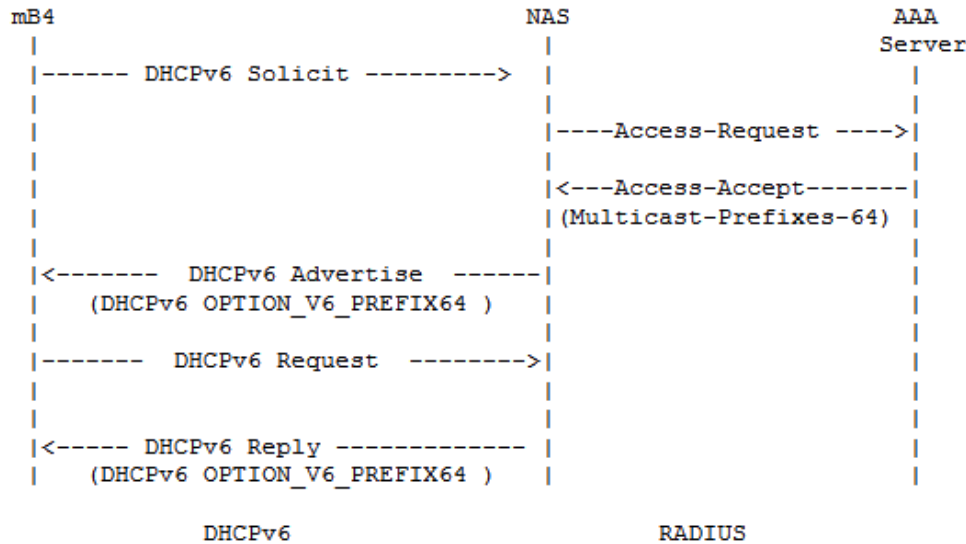


Figure 1: RADIUS and DHCPv6 Message Flow for an IP Session

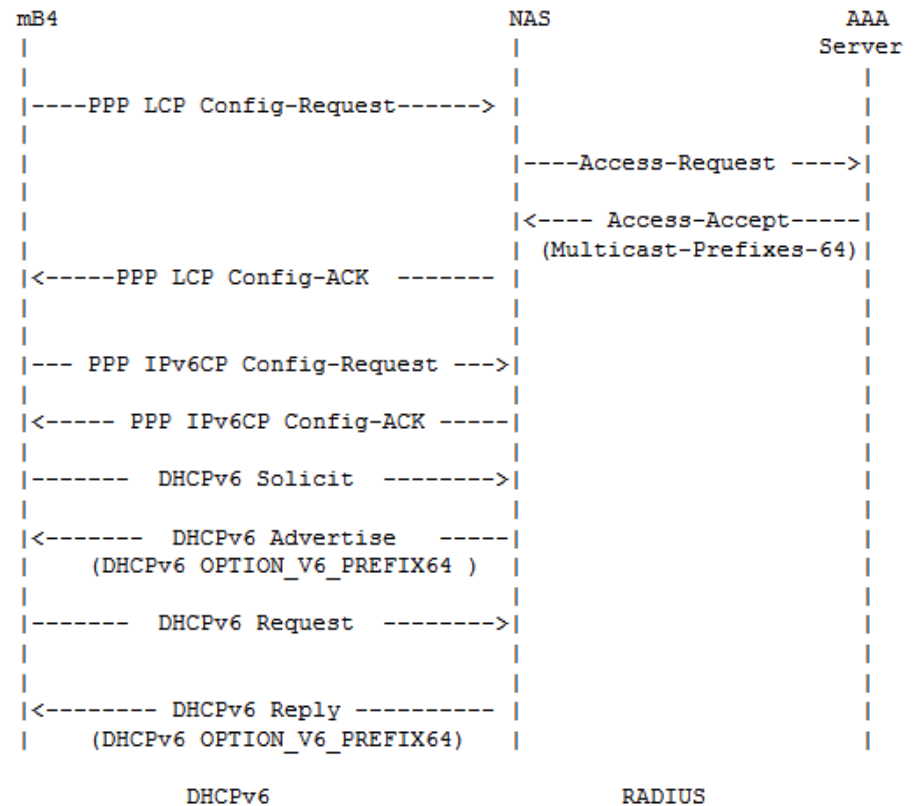


Figure 2: RADIUS and DHCPv6 Message Flow for a PPP Session

Main Changes from last version

- Adopts the same description as I-D. ietf-softwire-multicast-prefix-option
- Adopts the same description in RFC3315(DHCPV6)
- Addressed comments from Mailing list
 - Revise the detailed procedures during the 4-message exchanges.
- Add a section for acknowledgement

Comments and suggestion are welcome!

Adopt the document as a WG item?

- Thank you!