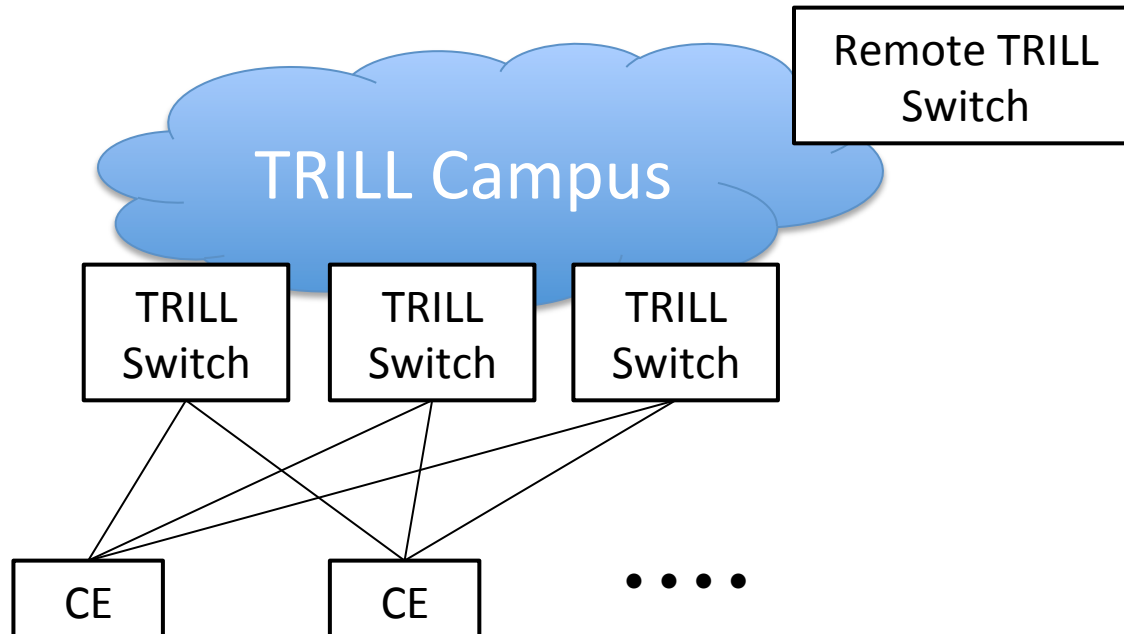


Active-Active Edge Status

Donald Eastlake 3rd
<d3e3e3@gmail.com>

Active-Active TRILL Edge

- Scenario: one or more CE (real or virtual servers or bridges) multiply connected to the TRILL campus via multiple TRILL switches with all connections active and the need for rapid fail-over the in case of link or TRILL switch failure.



Active-Active TRILL Edge

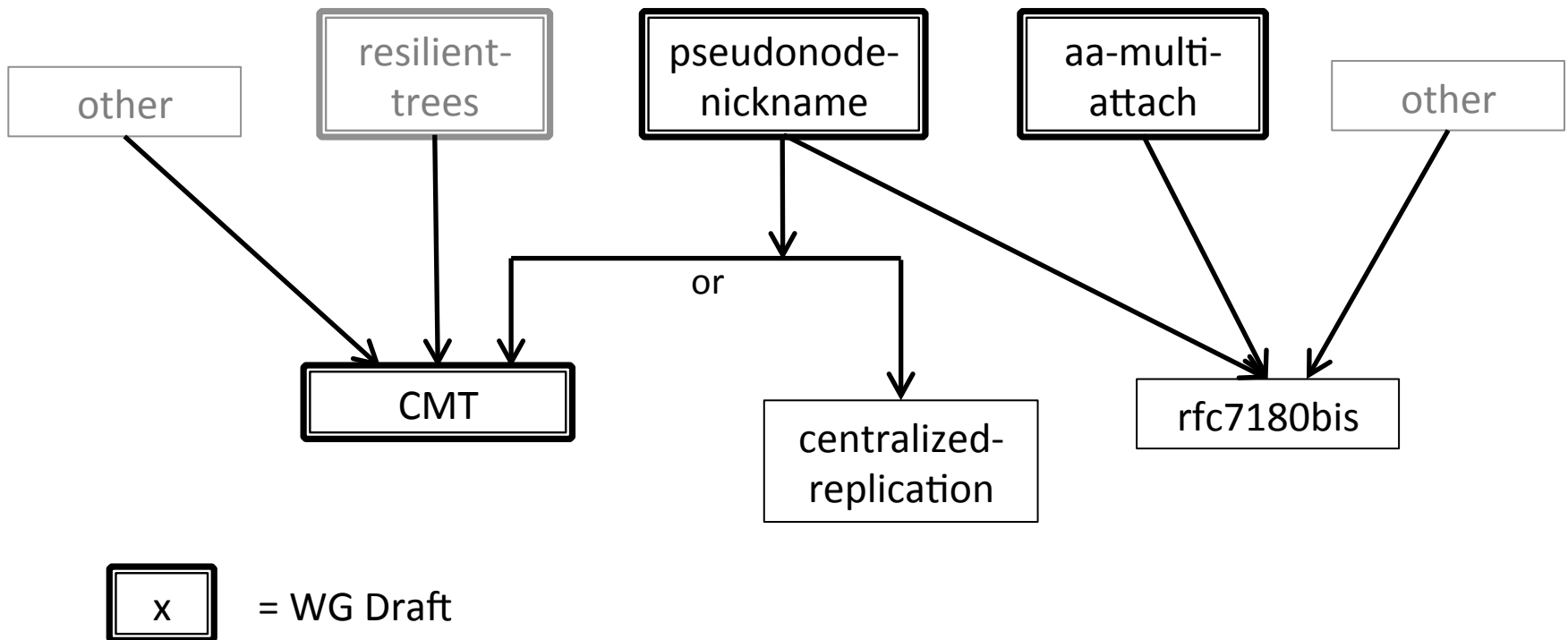
- Most Recent Presentations:
 - Problem statement, now RFC 7379
 - <http://www.ietf.org/proceedings/87/slides/slides-87-trill-1.pdf>
 - <http://www.ietf.org/proceedings/89/slides/slides-89-trill-2.pdf>
 - Survey of solutions
 - <http://www.ietf.org/proceedings/89/slides/slides-89-trill-3.pdf>
 - draft-ietf-trill-pseudonode-nickname-02.txt
 - <http://www.ietf.org/proceedings/90/slides/slides-90-trill-4.pdf>
 - draft-ietf-trill-aa-multi-attach-02.txt
 - <http://www.ietf.org/proceedings/90/slides/slides-90-trill-1.pdf>
 - draft-ietf-trill-cmt-03.txt
 - <http://www.ietf.org/proceedings/83/slides/slides-83-trill-3.pdf>

Active-Active TRILL Edge

- Drafts
 - draft-ietf-trill-pseudonode-nickname-02.txt
 - AAE group represented by a pseudo-nickname so members look like they are attached to a pseudo TRILL switch
 - No change at remote TRILL switches
 - draft-ietf-trill-cmt-03.txt
 - Solves RPF check problem with pseudo-nickname, has other uses. The RPF problem is also solved by centralized-replication
 - draft-ietf-trill-aa-multi-attach-02.txt
 - The multiple attachment of AAE group members is visible throughout the TRILL campus
 - No change at remote TRILL switches if they use ESADI (RFC 7357) instead of data plane learning

Active-Active TRILL Edge

- Draft dependencies



Active-Active TRILL Edge

- Active-active is currently the most urgent area for the TRILL WG
- Recommend WG Last Call for pseudonode-nickname, aa-multi-attach, and CMT.

