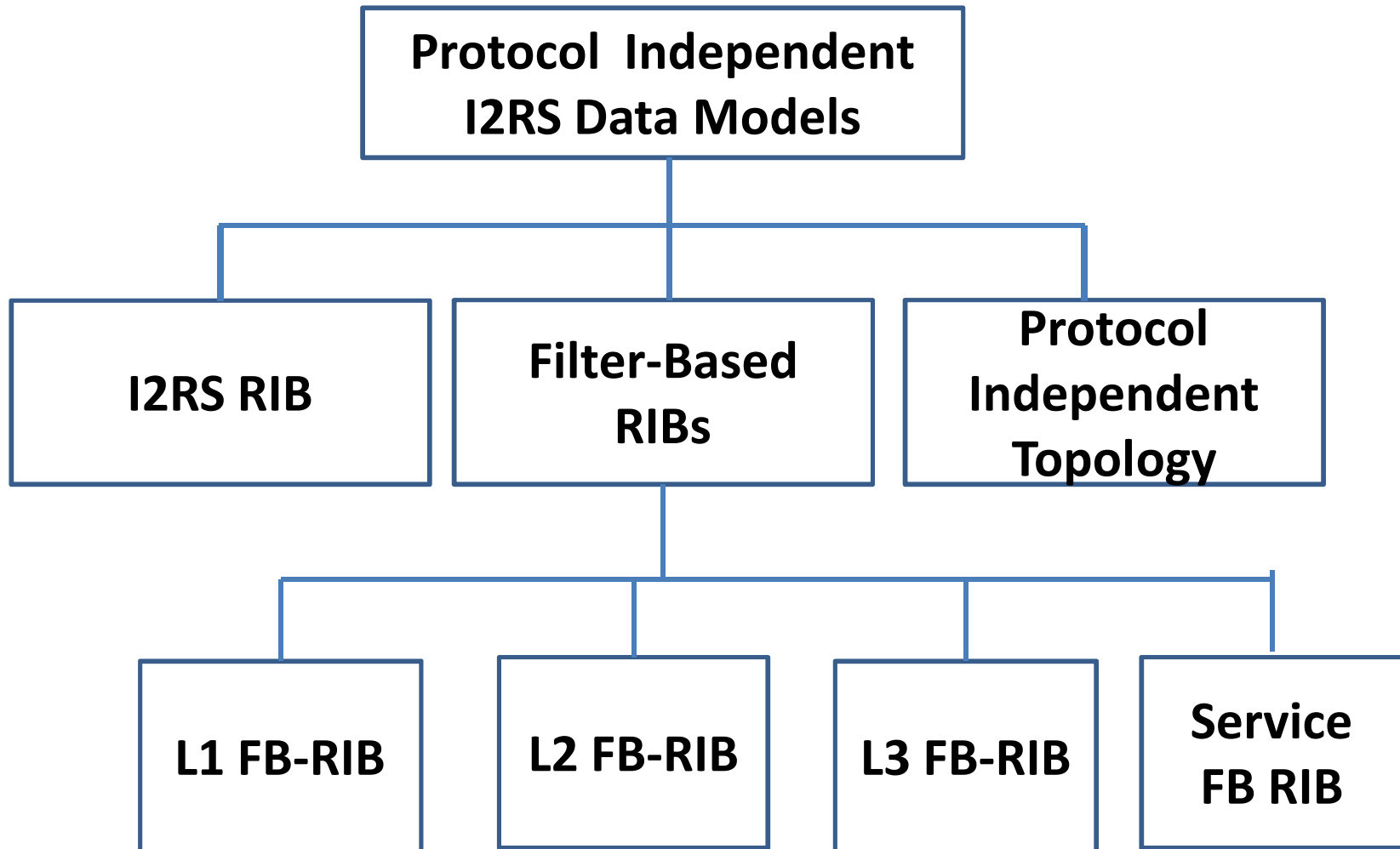


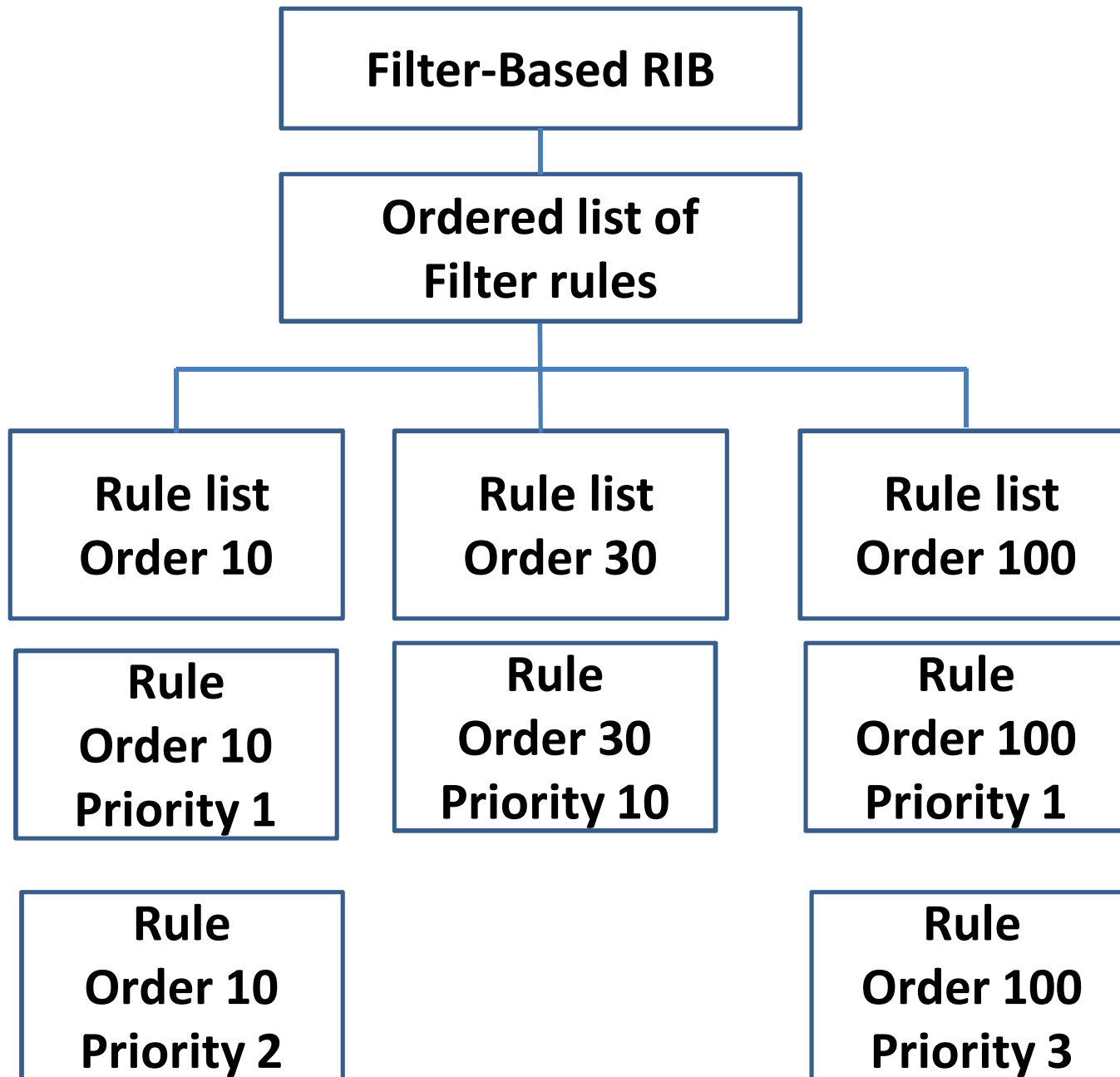
Filter-Based RIB

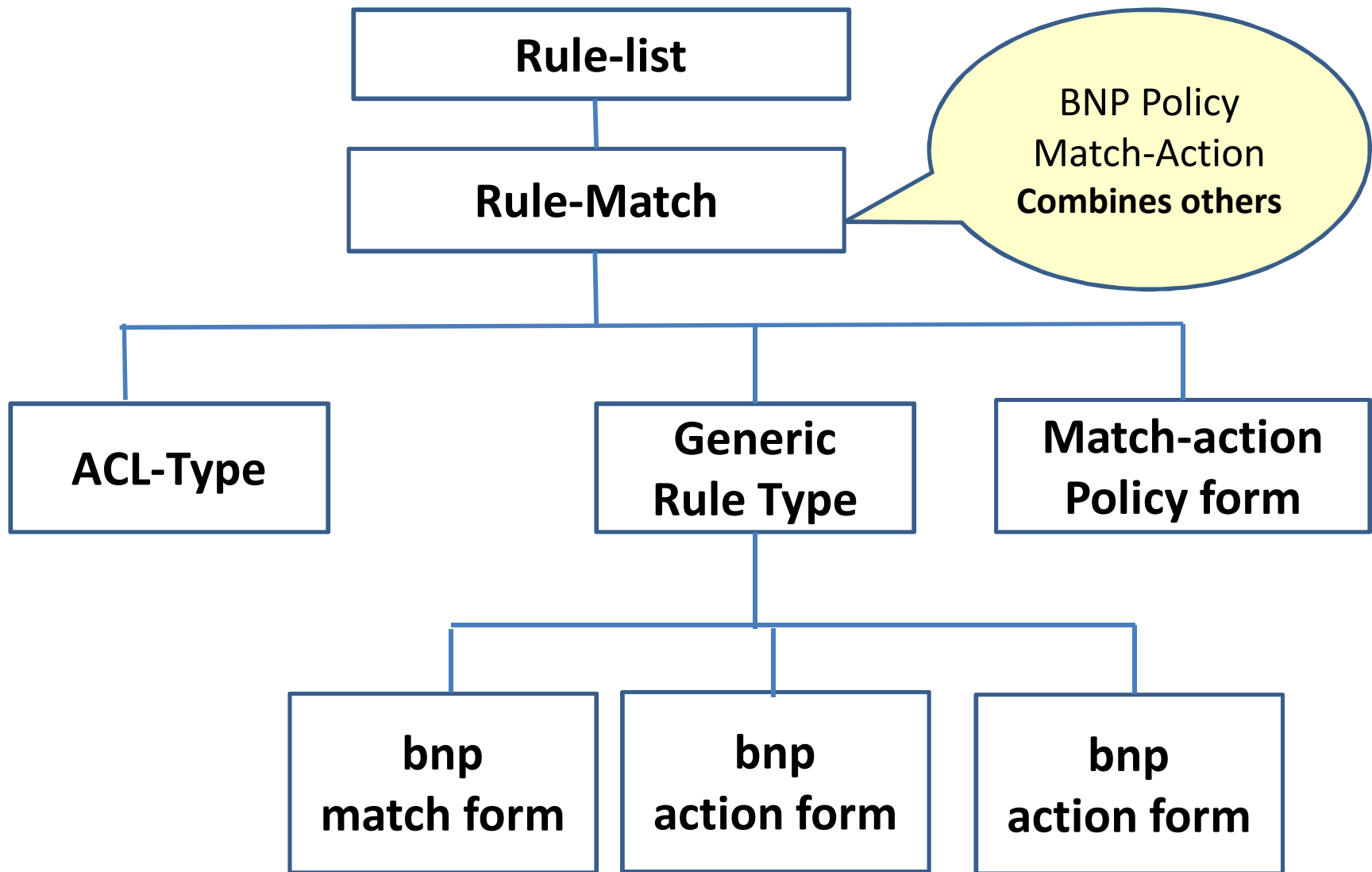
draft-kini-i2rs-fb-rib-info-model-00

**Sriganesh Kini , Anoop Ghanwani,
Ramki Krishnan, Qin Wu,
Dean Bogdanovic Jeff Tantsura
Russ White, Sue Hares**

Filter Based RIBS







+---FB-RIB-module

+---rw FB-RIB-instance-name

+---rw RB-RIB-router-id uint32

+---rw FB-RIB-interface*

| +---rw FB-RIB-interface interface-ref-id

+---rw FB-Default-RIB rib-ref

+---rw FB-RIB

+---rw FB-RIB-Name

+---rw FB-RIB-AFI

+---rw FB-RIB-intf*

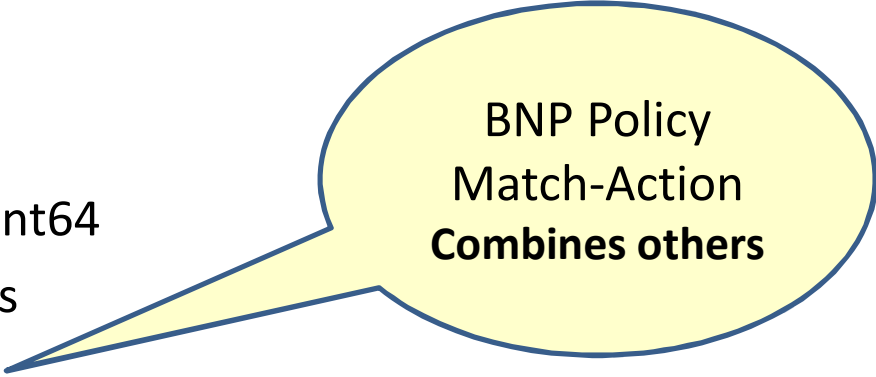
+---rw FB-FIB-status-info

| +---rw fb-rib-update-ref uint64

+---rw FB-RIB-Ordered-Filters

uses **bnp-policy for filters**

augments /nt:bnp-generic-rules/rule-group/



BNP Policy
Match-Action
Combines others

What's next

“ Design Team will

- . Determine Generic Filter-Based RIB Form
- . Create appropriate Filters-Match RIBs

“ Team Scope

- . 6 weeks to drafts
- . Discussion at May Interemis