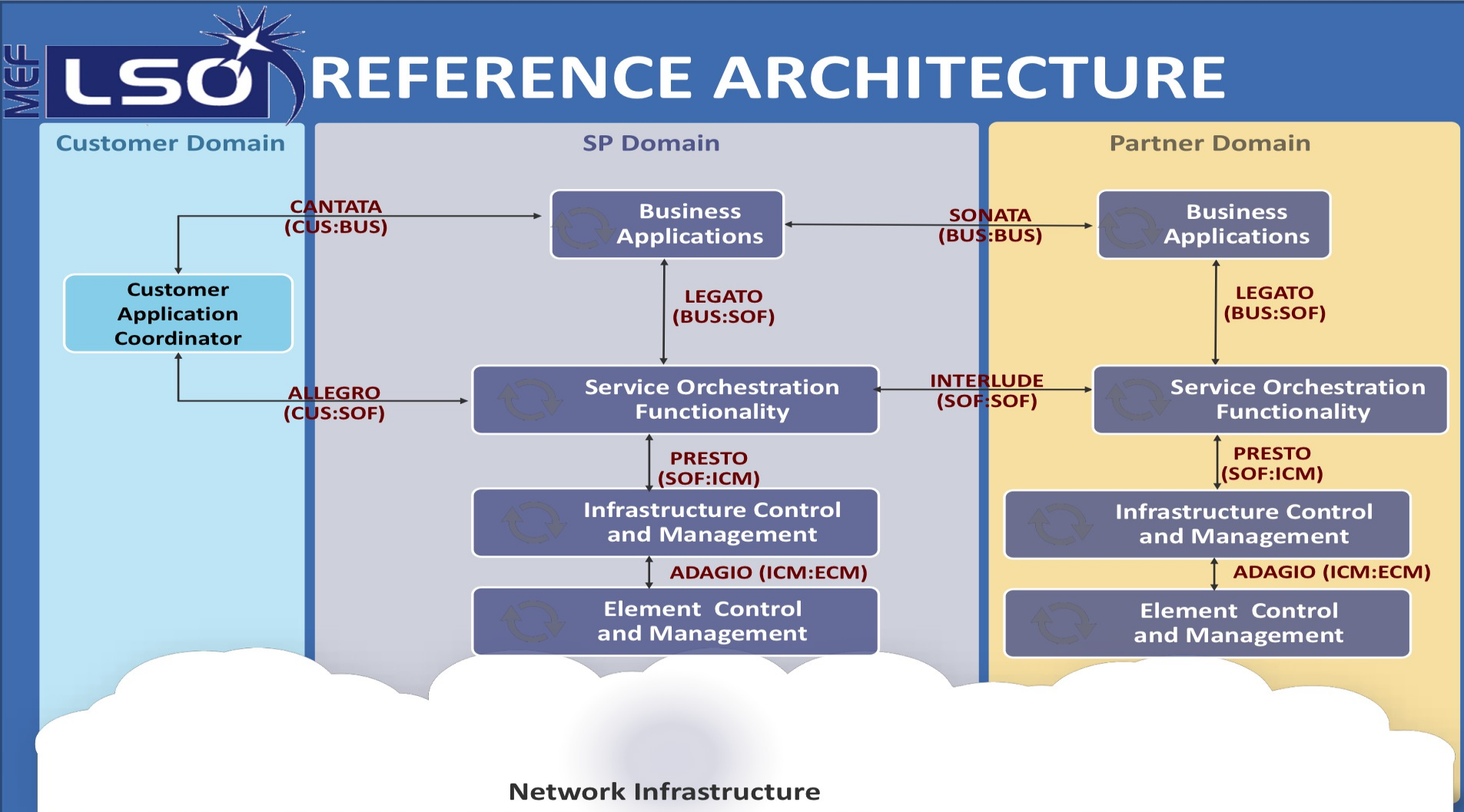


MEF Liaison Statement

Mahesh Jethanandani
Editor, YANG project, MEF

YANG modules for MEF services

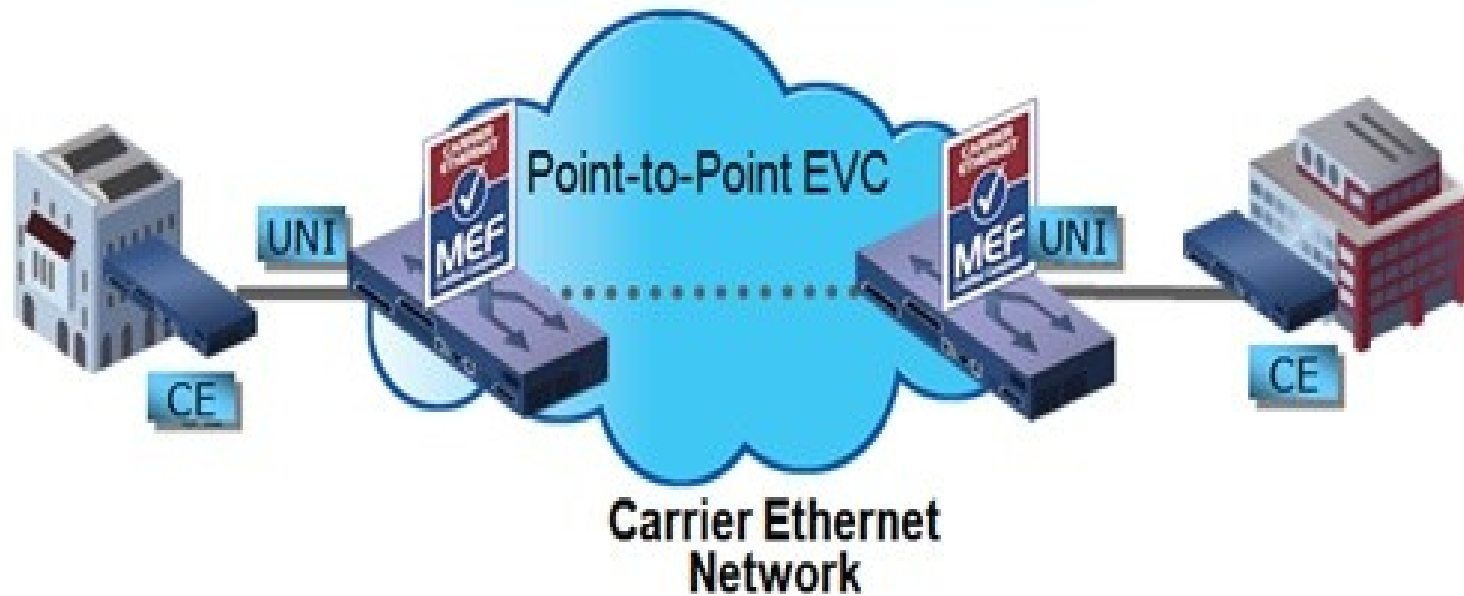


What MEF services

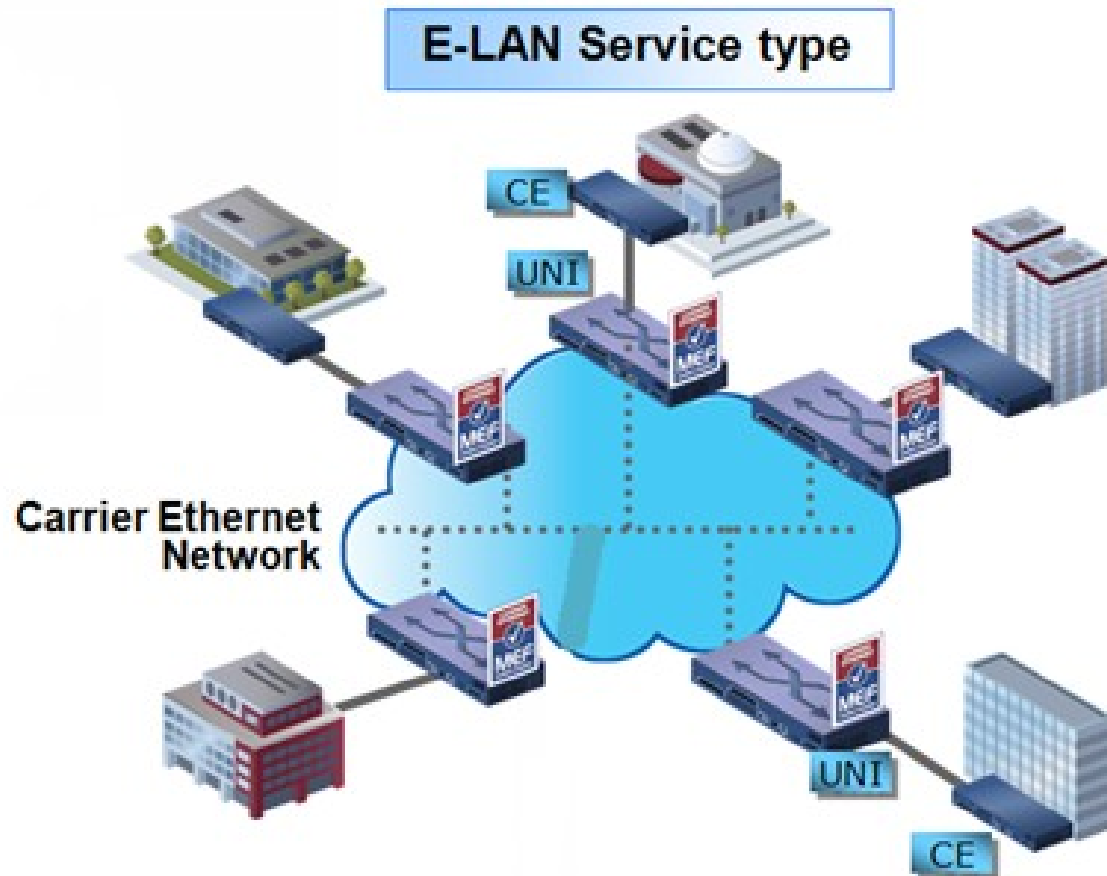
- * EVC based services as define in MEF 6.2
- * OVC based services as defined in MEF 51

E-Line

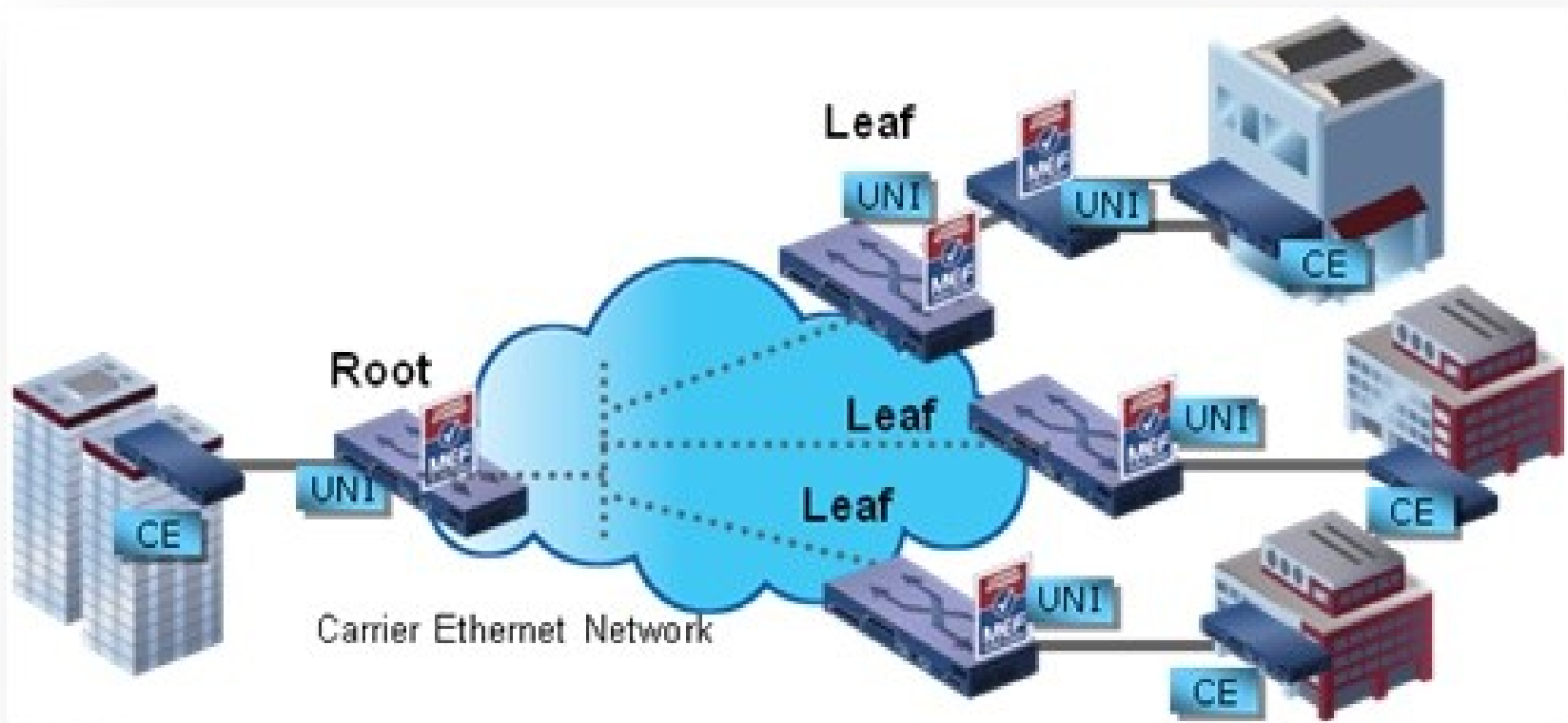
E-Line Service type



E-LAN



E-Tree



Why here?

- * WG looking at service models
- * Collaboration/Overlap

Q&A