

Conveying Policies associated with Traffic Engineering Paths over PCEP Session

draft-sivabalan-pce-policy-identifier-00.txt

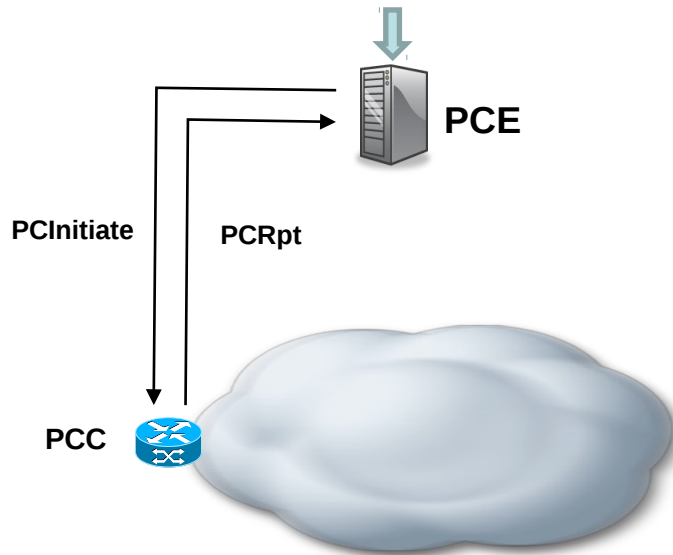
IETF 94

Jeff Tantsura (Ericsson) - Presenter
Siva Sivabalan, Clarence Filsfils(Cisco)
Jonathan Hardwick (Metaswitch)

November 3, 2015

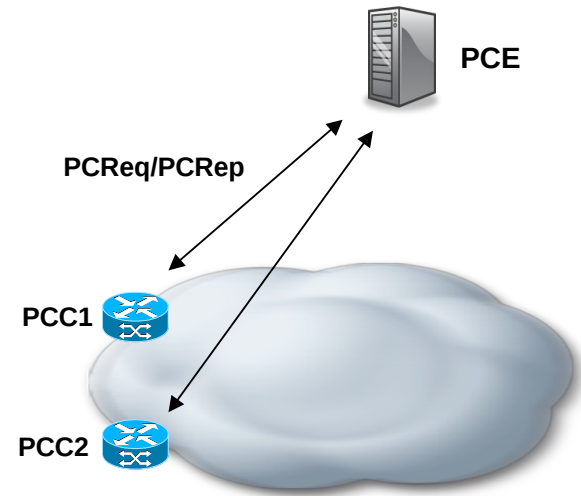
Motivation

Example 1



Policy: PCE wants to instantiate and monitor it using BFD

Example 2



Policy: PCC1 and PCC2 require diverse paths

A generic mechanism for opaquely carrying policies over PCEP channel enables operators to introduce and deploy policies faster.

Proposed Approach

- New OPTIONAL TLV called “POLICY-ID-TLV” is introduced:
- The TLV contains:
 - A numeric policy Identifier
 - A flag to indicate if the policy associated with the TLV is mandatory
 - Optional one or more VENDOR-INFORMATION-TLV(s)
- The TLV is associated with LSP object, and can be carried in PCInitiate, PCRpt, PCUpd, PCReq, and PCRep messages.

Next Step

- Have real use-cases.
- Already supported by multiple implementations
- Early IANA code-point allocation will be requested soon.

Thank You !