

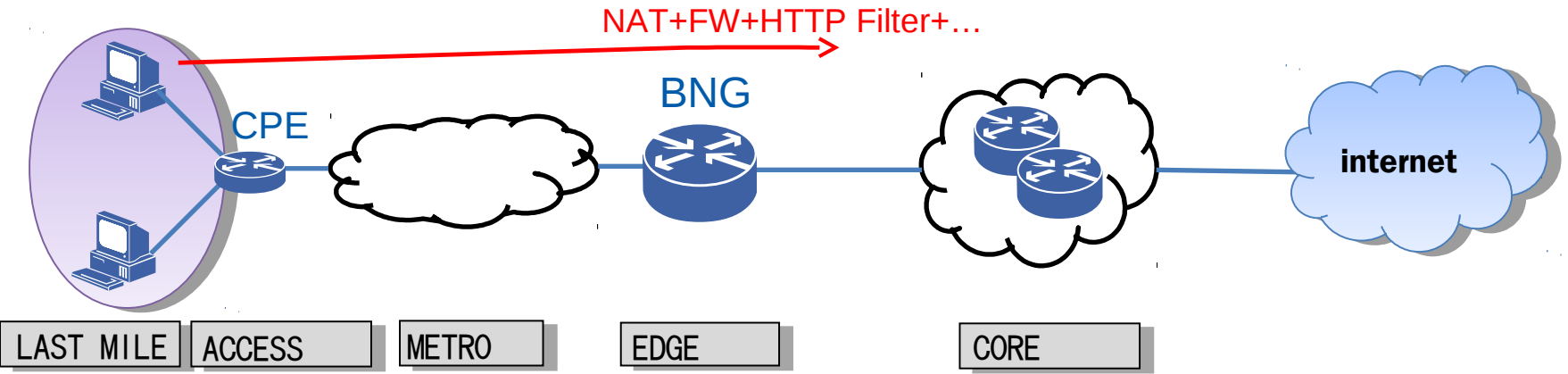
Service Function Chain Use Cases in Broadband

draft-meng-sfc-broadband-usecases

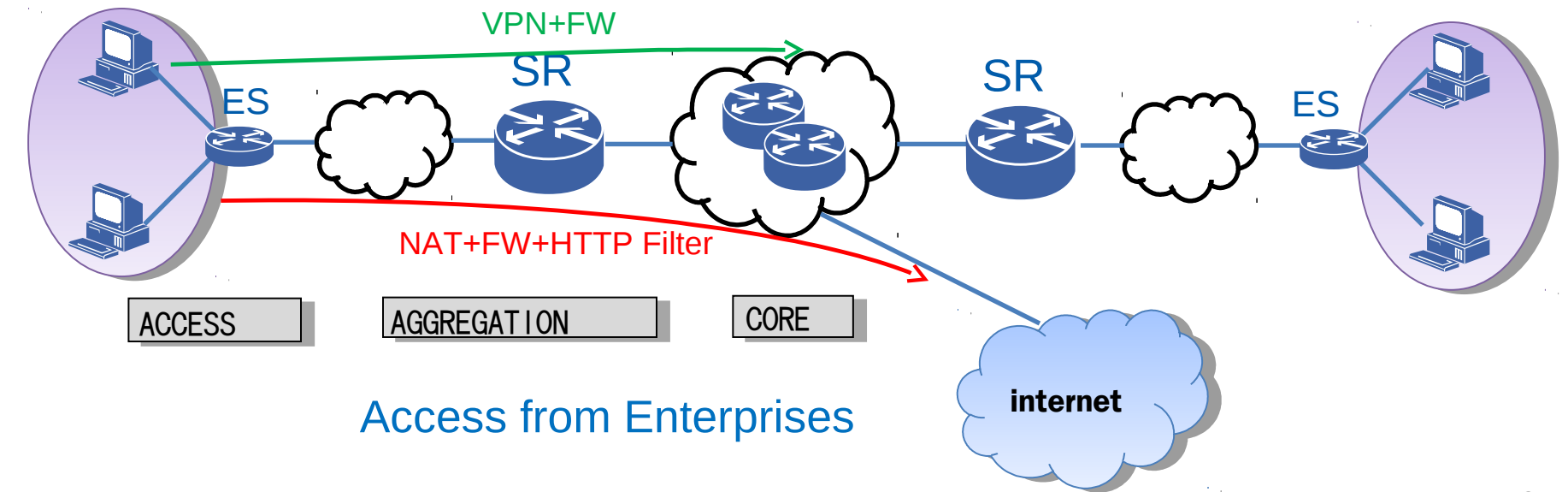
IETF 94-Yokohama, 5th, Nov 2015

C. Xie, W. Meng, C. Wang & B. Khasnabish

Scenarios

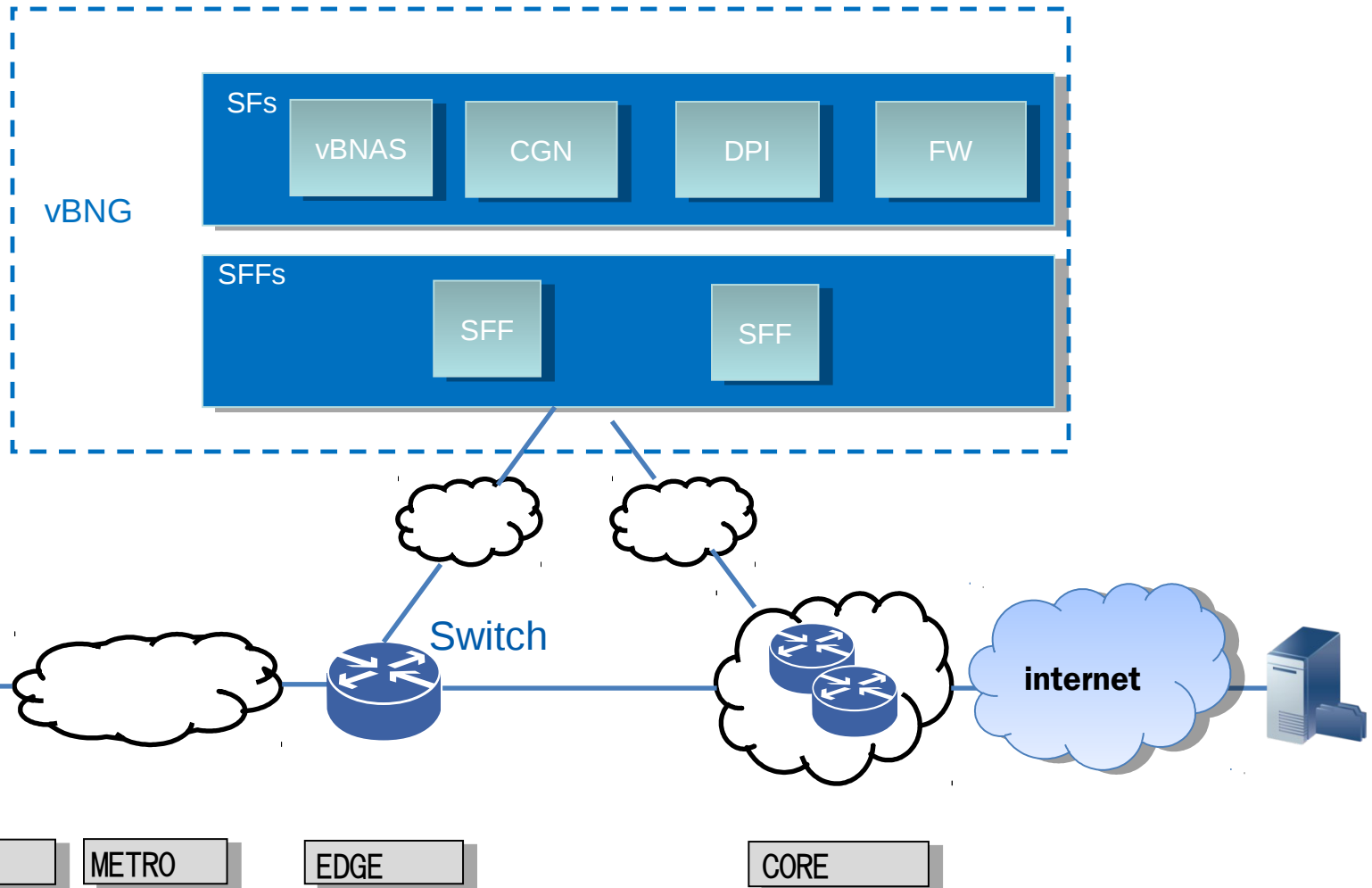


Internet Access from Homes

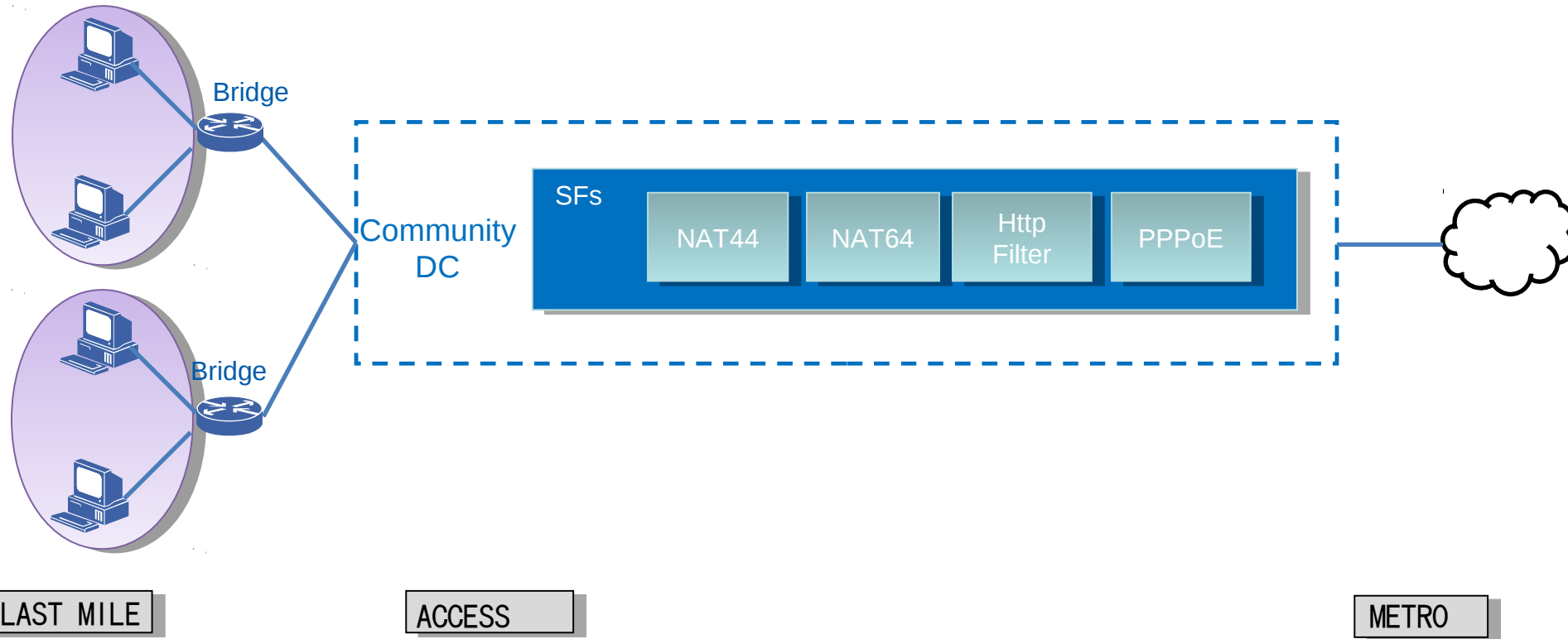


Access from Enterprises

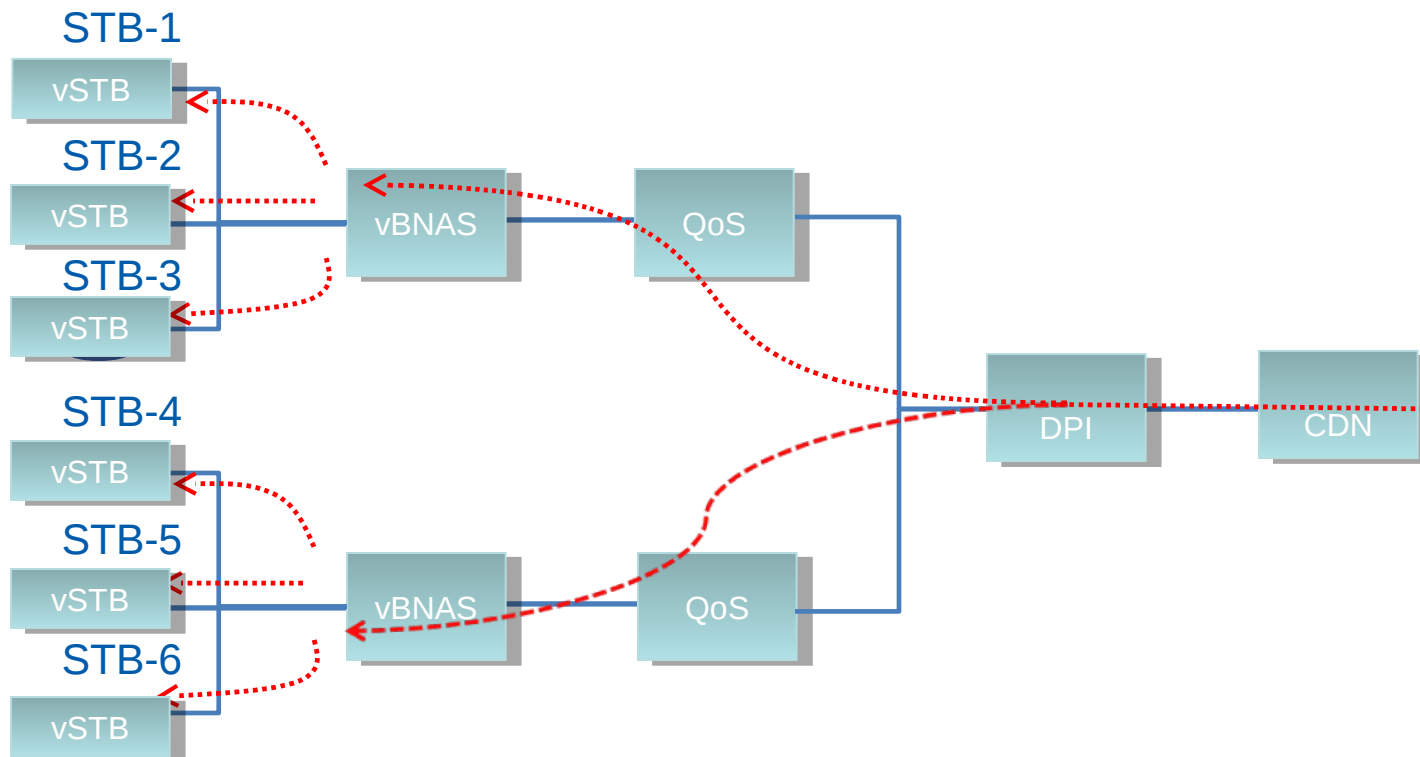
vBNAS & vBNG



Unified CPE



IPTV(forked and nonsymmetric SFC)

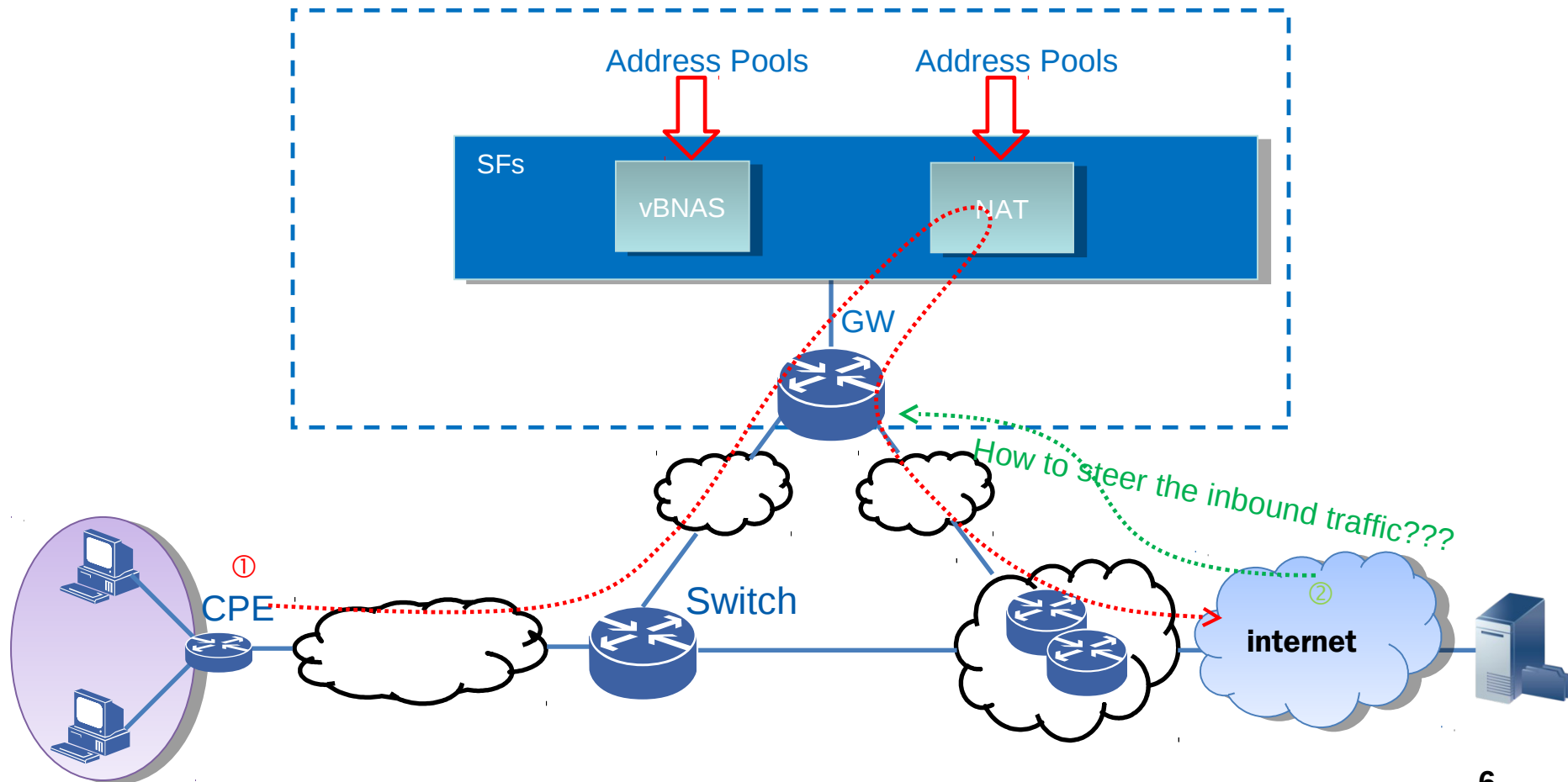


ISSUES

One SFC? six duplicated SFCs?
One SFP? six duplicated SFPs?

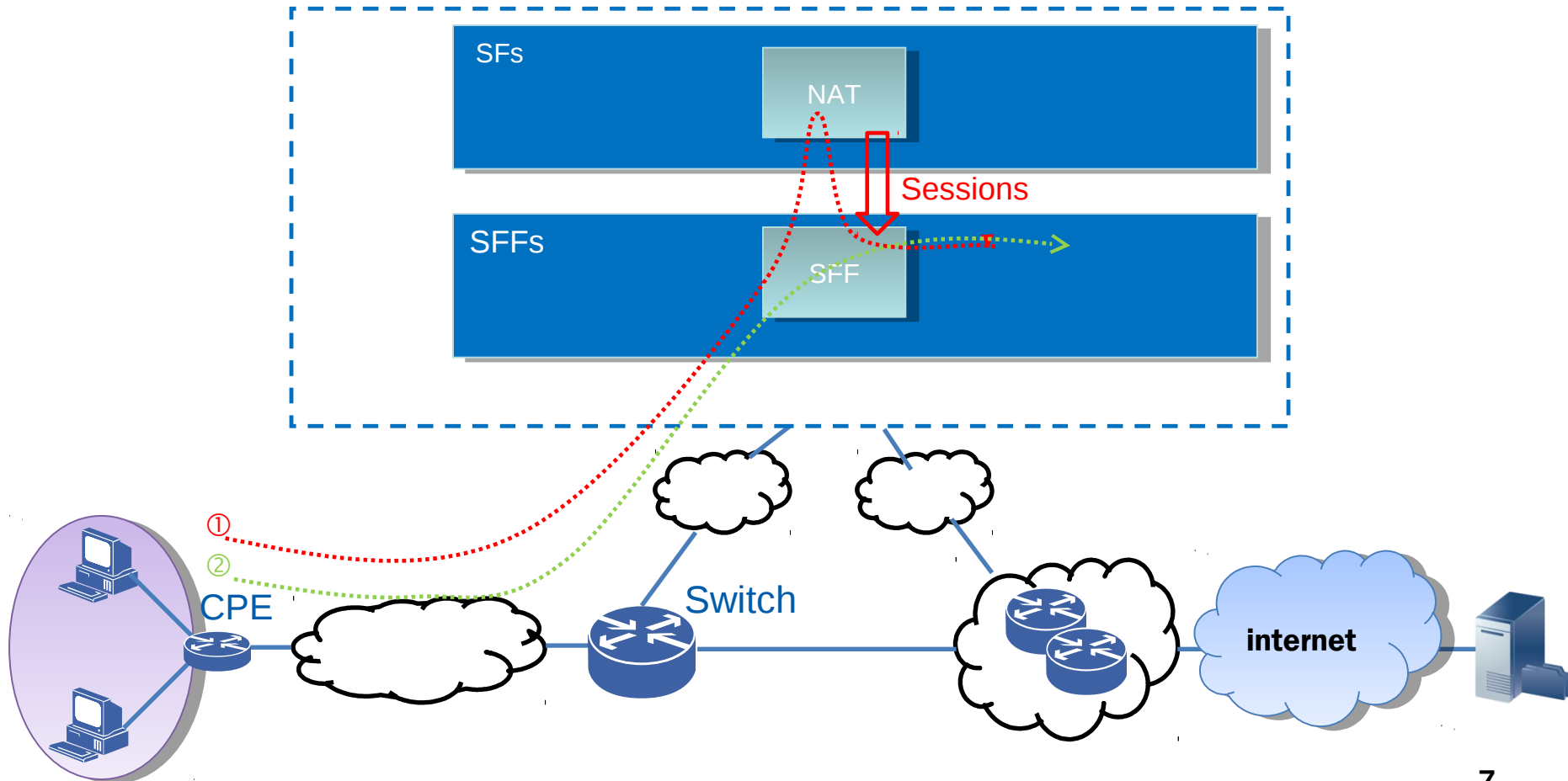
ISSUE-1

- HOW to manage address pools? WHO advertise route information to external network based on IP address pools.



ISSUE-2

- For forwarding and control in a stateful SF, Separation OR Centralization



Next Step

- Solicit more comments.
- Adopt the document as a WG item?