

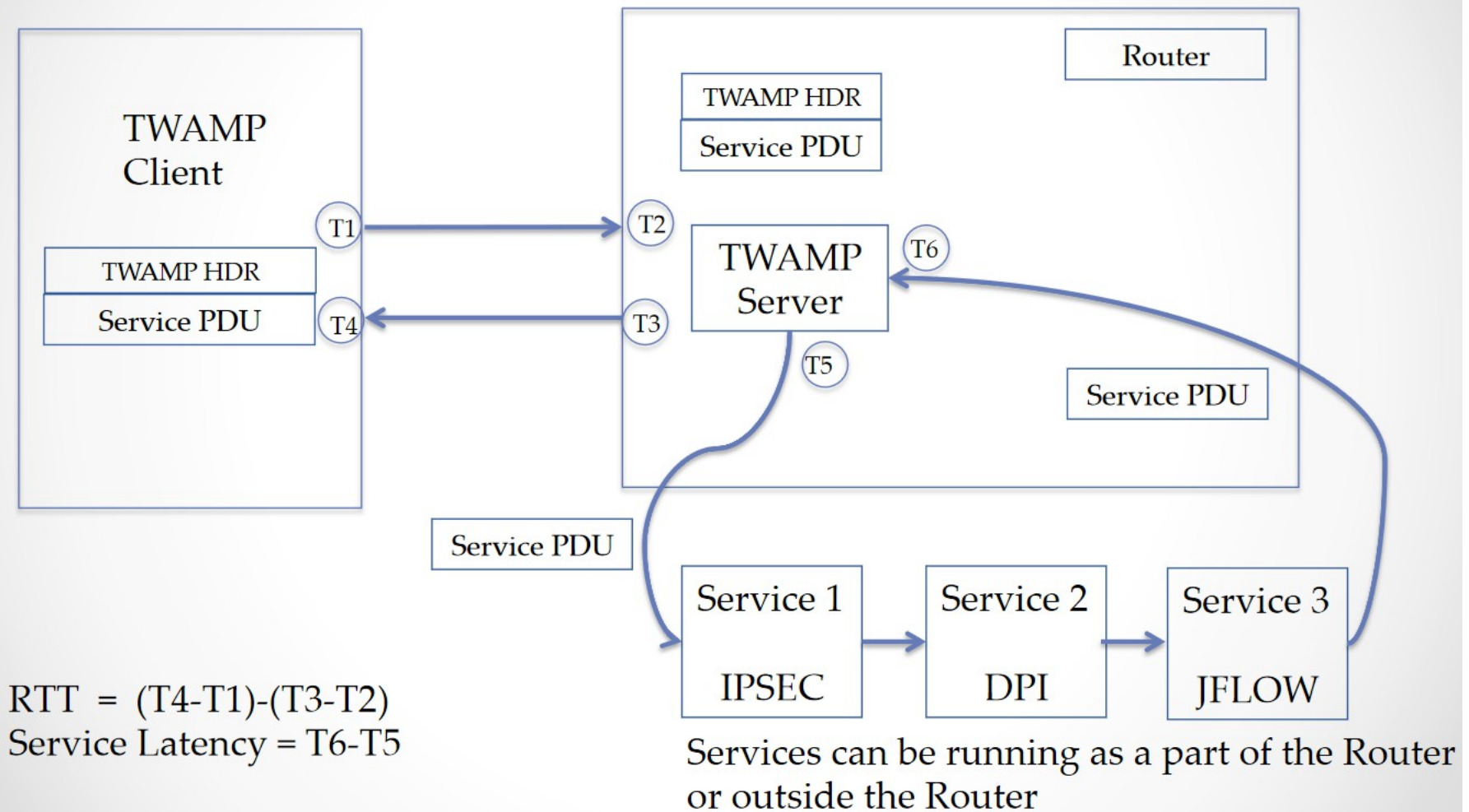
# Measuring Service KPIs

Vinayak Hegde  
Srivathsa S  
Peyush Gupta

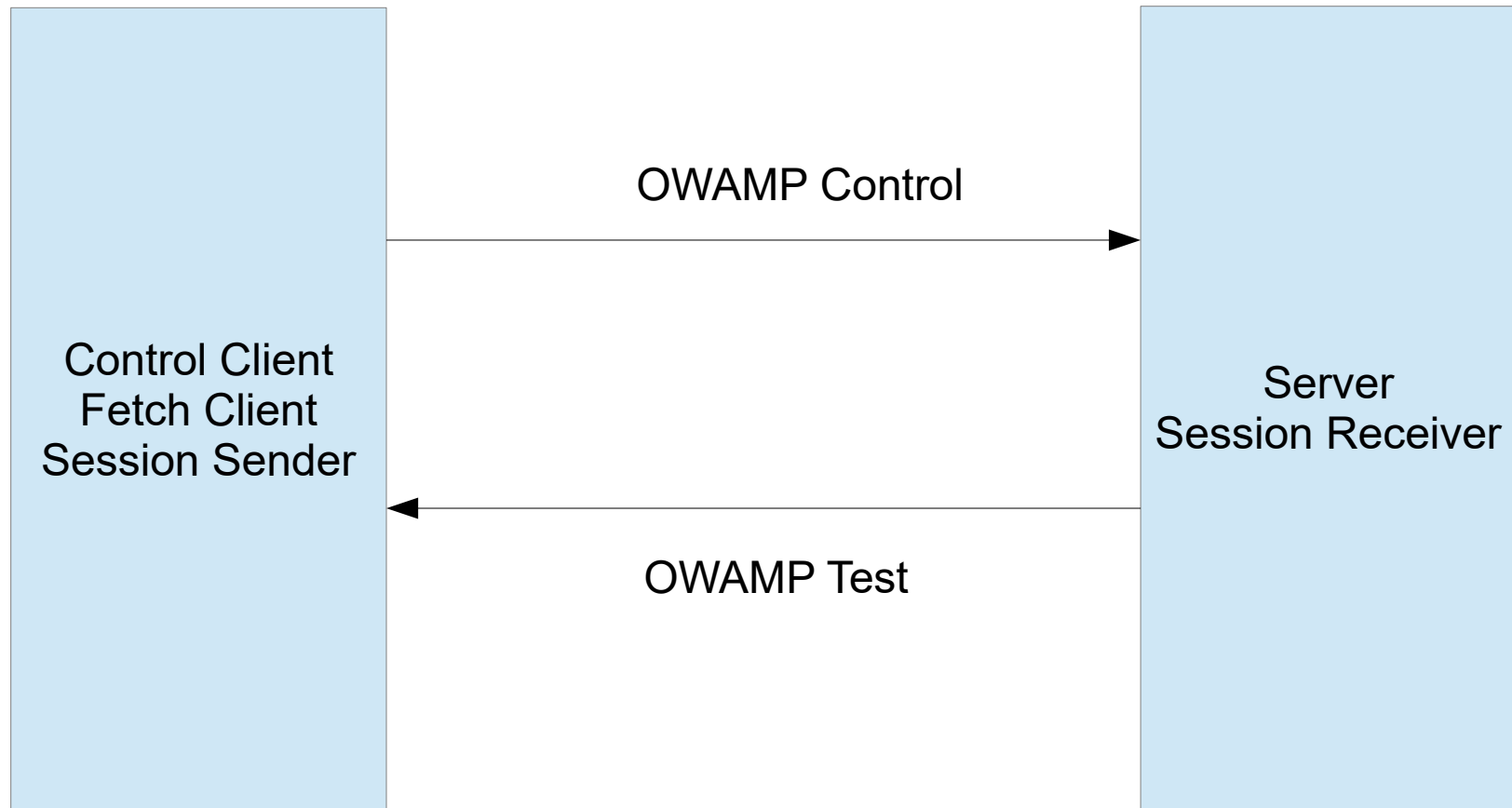
# Problem we are trying to solve

- We are moving to a virtualized world (VMs and Containers) increasingly
- Lots of factors that can lead to glitches
- How to figure out where the problem lies ?  
What layer ? What issues ?
- Customer Feedback
- Temporal location of results and co-location
- Example of streaming

# Service Latency



# Another implementation using OWAMP



# Comparison of two approaches

- TWAMP more widely deployed
- Implementation exists (demo)
- Both paths can be examined in case of asymmetry
- Pluggable architecture (for tests)

# Q&A

- Thanks