

# Problem statement of SDN and NFV co-deployment in cloud datacenters

**draft-gu-sdnrg-problem-statement-of-sdn-nfv-in-dc-01**

**draft-gu-sdnrg-decoupling-scheme-hypervisor-SDN-00**

Rong Gu (Presentor)

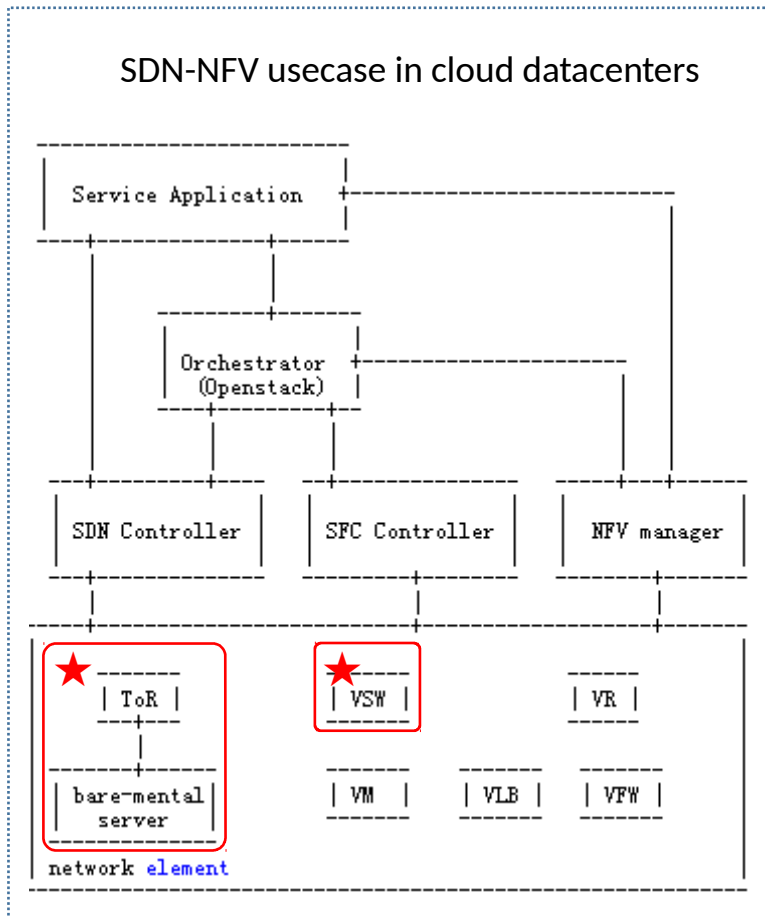
Chen Li

From China Mobile

---

--

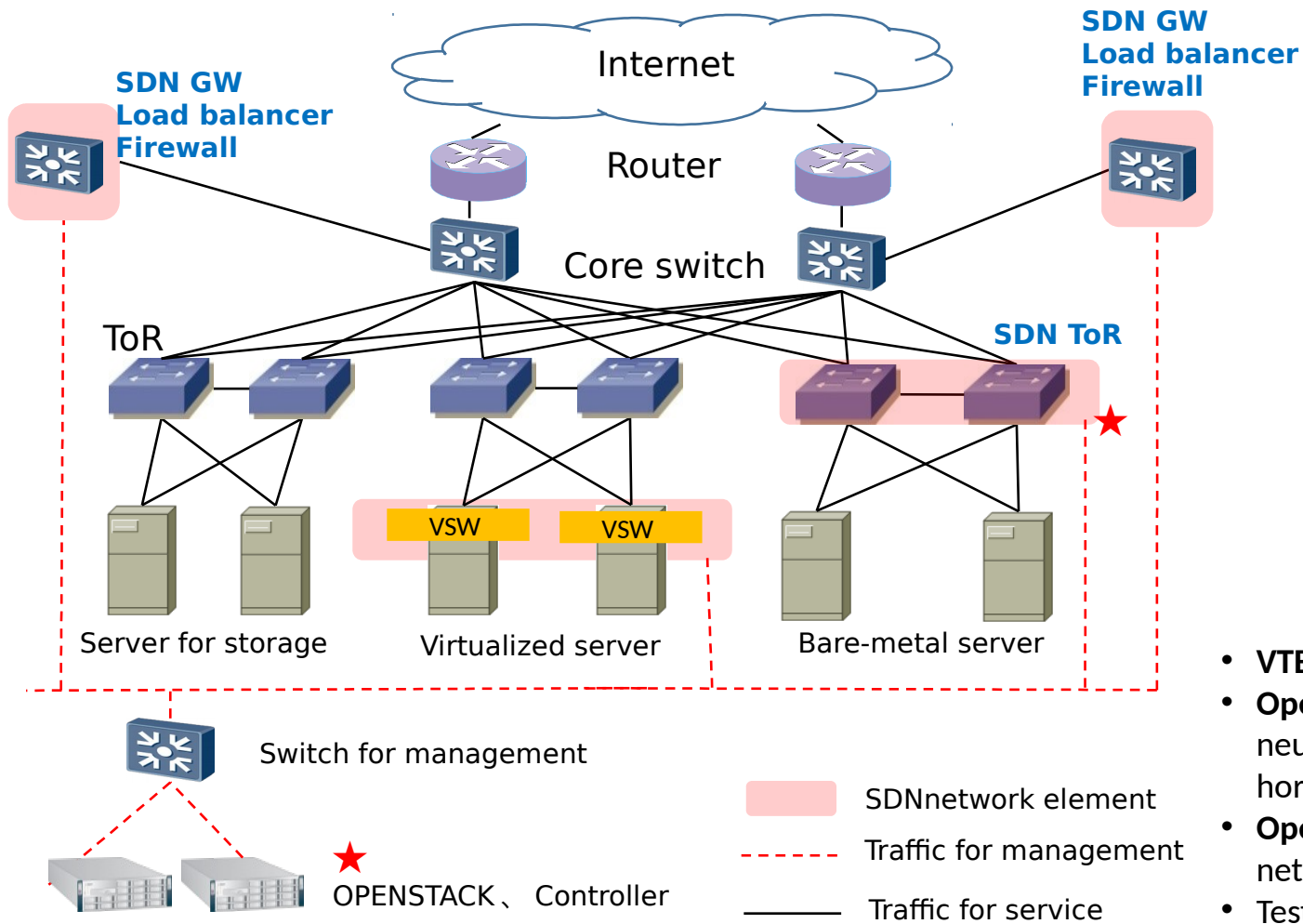
# Introduction



- Problems found out in SDN/NFV co-deployment in cloud datacenters have been presented in this draft due to practical practice.
- Changes from -00 to -01
  - ✓ **Virtualized platforms:** details talking about in the draft-gu-sdnrg-decoupling-scheme-hypervisor-SDN-00
  - ✓ **Network architecture:** some changes when bare-metal servers are introduced
  - ✓ **Interface standardization:** NBI & SBI, especially open-source devices (ODL/ONOS) are popular
  - ✓ **Virtualization high availability**
  - ✓ **Benchmark standardization**
  - ✓ **Extension of network:** openstack \controller \forwarding devices limitations
  - ✓ **DCI:** SDN datacenters and traditional datacenters
  - ✓ **Practical practice experience**

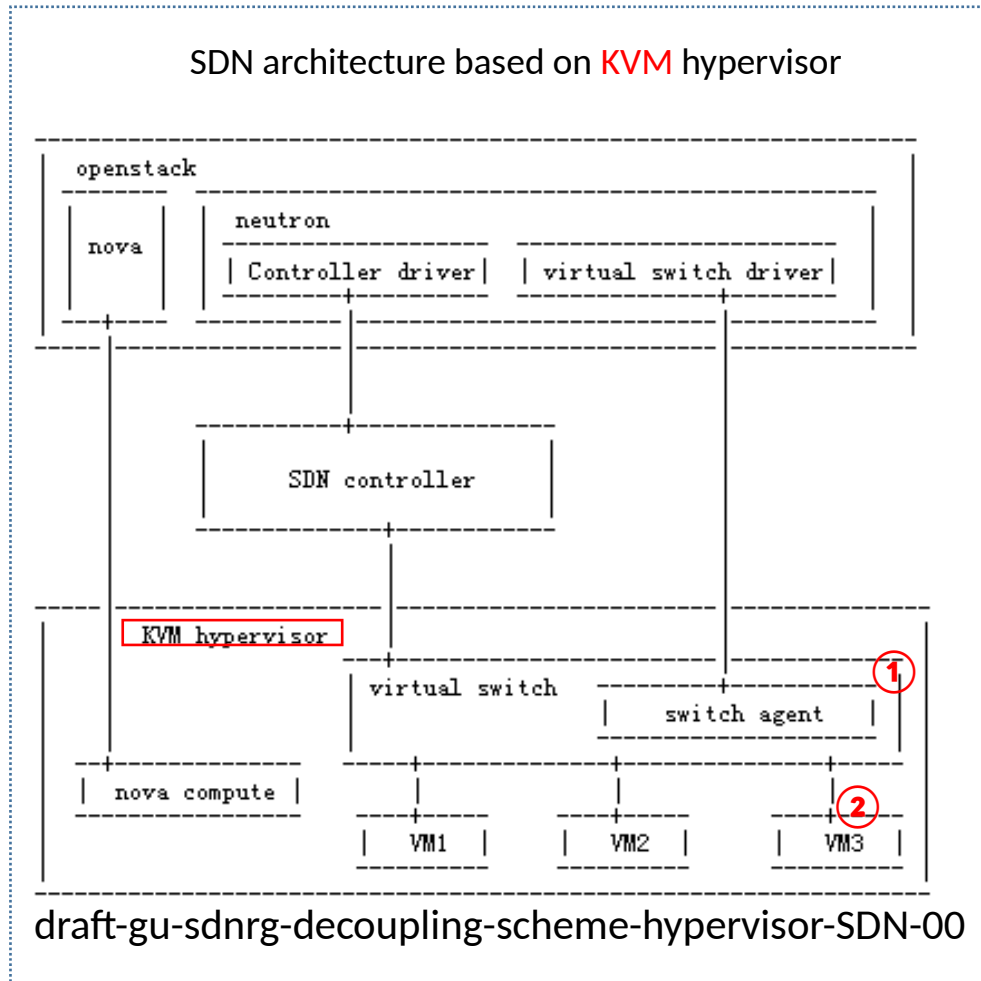
draft-gu-sdnrg-problem-statement-of-sdn-nfv-in-dc-01

# Network architecture:



- **VTEP:** SDN ToR and vsw
- **Openstack:** ironic and neutron module with horizon undeveloped
- **Openstack version:** network limitations
- Test benchmark

# Virtualized platform:



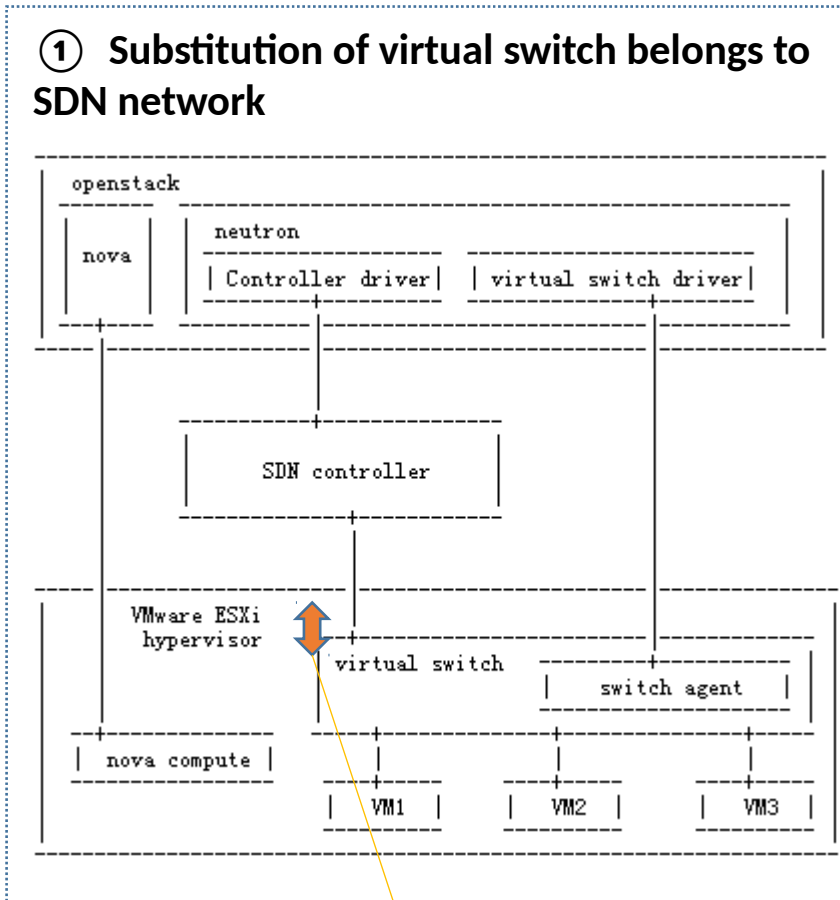
- In private cloud, some commercial hypervisors other than KVM is used.

- **Problems:**

- ✓ Integrations of SDN controller with different hypervisors
- ✓ Relationship between open-vsw or SDN vsw and vsw bonding on the hypervisor
- ✓ Two solutions and their limitations:
  - ① private interfaces of hypervisor
  - ② the bottleneck of virtual machines

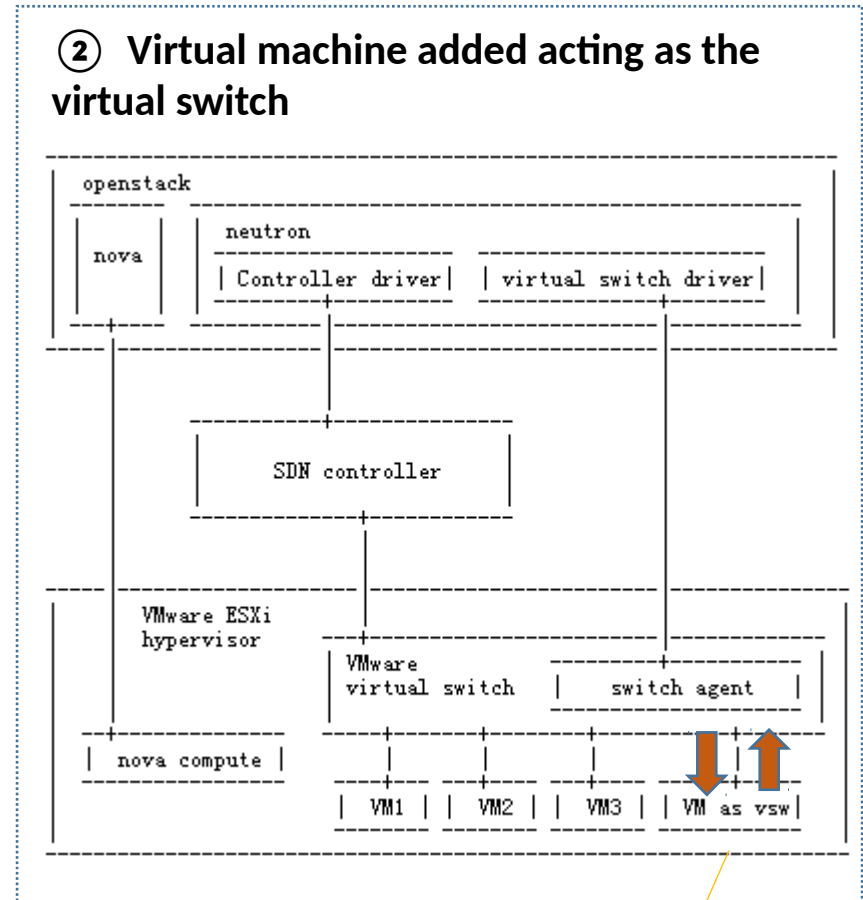
# Virtualized platform:

## ① Substitution of virtual switch belongs to SDN network



Private interface of hypervisor  
Cooperate with hypervisor

## ② Virtual machine added acting as the virtual switch



All traffic goes through vm as vsw  
which can be the bottleneck

# Extension of network and DCI

In the near future:

- Extension of network

Number of servers and virtual machines supported by SDN network is related with **openstack, controller, and all forwarding devices**. In fact, it takes a long time in building flow table on controllers, such as 300 VMs co-built about 25minutes after the improvement. **How about 3000 vms, 30000 vms? How about bare-metal servers without testing environment?**

- Datacenter inter-connection

SDN cloud datacenters belongs to different vendors inter-connection; Traditional cloud datacenters and SDN cloud datacenters inter-connection with SDN devices equipped.

---

--

# Questions

- Would you like to share your practice experience?
- Would you like to participate and contribute to this work?
- How can all the problems summarized in building this informational draft?

# Next Step...

## Solicit comments and suggestions...

---

--



# MANY THANKS

Rong Gu (Presentor)

Chen Li

From China Mobile

---

--