

Measurement and Analysis for Protocols

Research Group (maprg)
Chicago, March 28, 2017

co-chairs <maprg-chairs@ietf.org>:
Mirja Kühlewind <mirja.kuehlewind@tik.ee.ethz.ch>
Dave Plonka <dave@plonka.us>

Intellectual Property Rights (IPR)

The IRTF follows the IETF Intellectual Property Rights (IPR) disclosure rules. This is a summary of these rules as they relate to IRTF research group discussions, mailing lists and Internet Drafts:

- If you include your own or your employer's IPR in a contribution to an IRTF research group, then you must file an IPR disclosure with the IETF.
- If you recognize your own or your employer's IPR in someone else's contribution and you are participating in the discussions in the research group relating to that contribution, then you must file an IPR disclosure with the IETF. Even if you are not participating in the discussion, the IRTF still requests that you file an IPR disclosure with the IETF.
- Finally, the IRTF requests that you file an IPR disclosure with the IETF if you recognize IPR owned by others in any IRTF contribution.

The IRTF expects that you file IPR disclosures in a timely manner, i.e., in a period measured in days or weeks, not months. The IRTF prefers that the most liberal licensing terms possible are available for IRTF Stream documents, see RFC 5743. You may file an IPR disclosure here: <http://www.ietf.org/ipr/file-disclosure>

See RFC 3979 (BCP 79) for definitions of "IPR" and "contribution" and for the detailed rules (substituting "IRTF" for "IETF").

Administrivia

- Charter: <https://datatracker.ietf.org/group/maprg/charter/>
- Mailing List: maprg@ietf.org
Subscriptions: <https://www.ietf.org/mailman/listinfo/maprg>
- Today's slides: <https://datatracker.ietf.org/meeting/98/session/maprg/>
- Remote participation
Audio: <http://ietf98streaming.dnsalias.net/ietf/ietf986.m3u>
Meetecho: <http://www.meetecho.com/ietf98/maprg>
Jabber: xmpp:maprg@jabber.ietf.org?join

Charter Notes

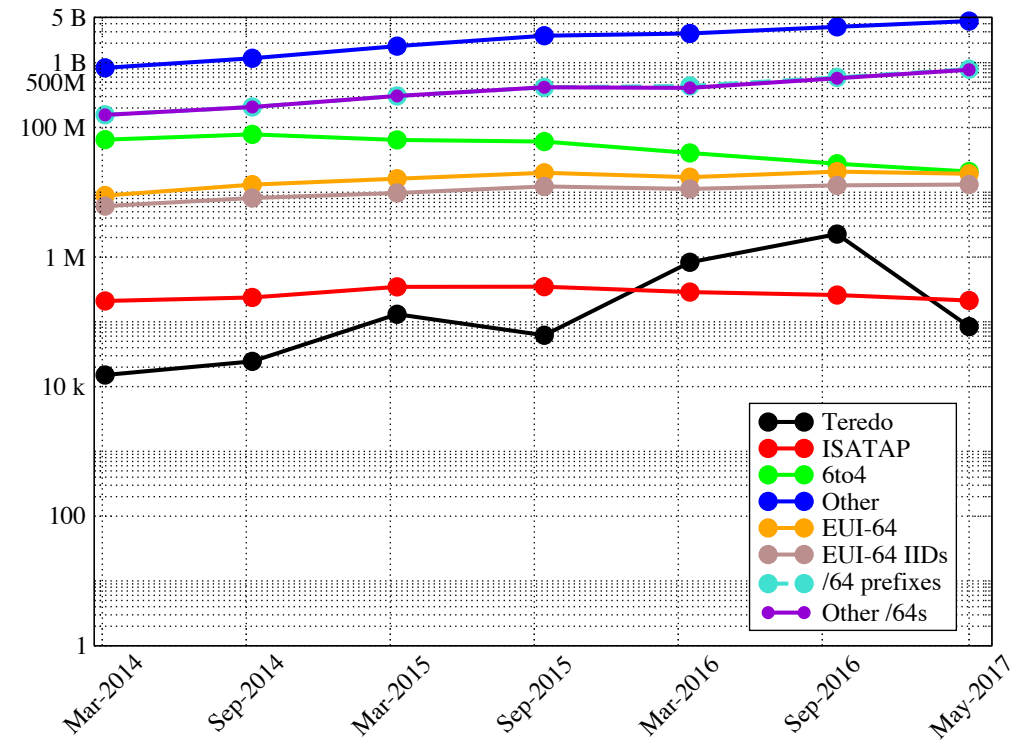
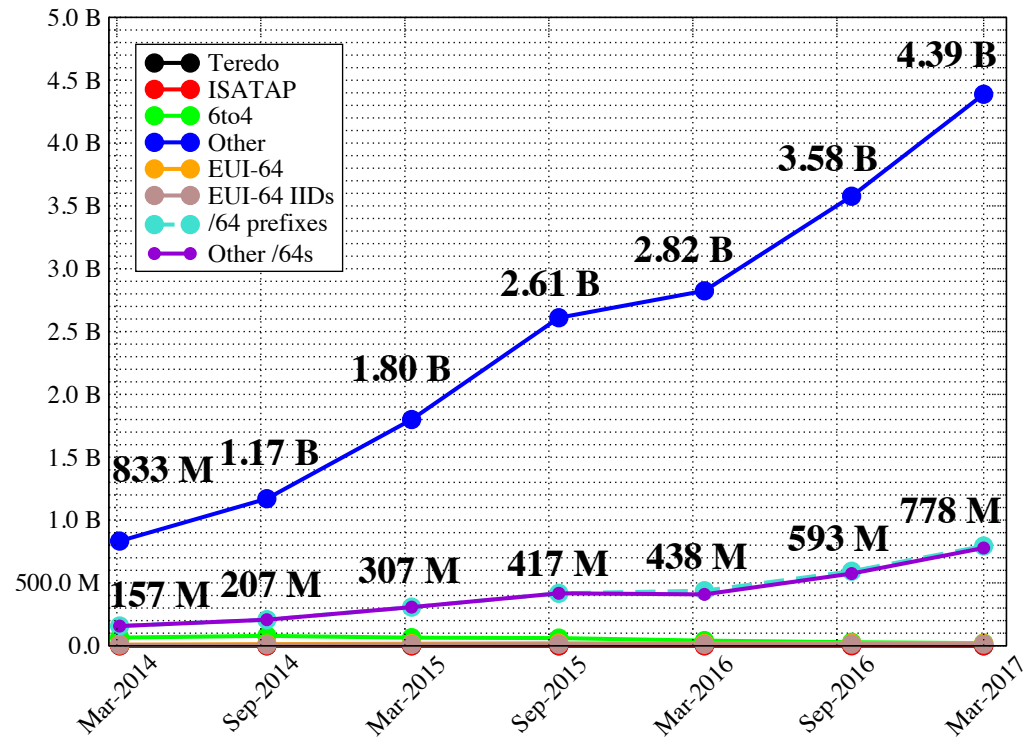
The *Measurement and Analysis for Protocols Research Group (maprg)* will focus on two topics:

- (1) Discussion of measurements and techniques that would inform *the development, deployment, and/or operation of existing IETF-defined protocols.*
- (2) Presentation of measurement results that inform *same.*

Presentations and work items must be obviously or explicitly “mapped” to those aspects of IETF-defined protocols, existing or works-in-progress.

Recent Related Works

- Active IPv6 client address counts per week (Akamai):



- Sunsetting SixXS: <https://www.sixxs.net/sunset/>

Agenda (i)

- **Introduction & Overview** – Dave Plonka and Mirja Kühlewind, 5m
- **Refresing MLab: www.measurementlab.net** – Matt Mathis, 5m
- **LE (Lower Effort) codepoint: preliminary results and ongoing work in the IETF** – Gorry Fairhurst, 15m
- **TCP ECN Performance Data Measurements**– Padma Bhooma, 20m

Agenda (ii)

- **Measuring Trends and Patterns in IPv6 Support**– Tommy Pauly, 10m
- **You can -j REJECT but you can not hide: Global scanning of the IPv6 Internet**– Tobias Fiebig, 15m
- **No domain left behind: is Let's Encrypt democratizing encryption?** – Giovane C. M. Moura, 20m

Agenda (iii)

- **No domain left behind: is Let's Encrypt democratizing encryption?** – Giovane C. M. Moura, 20m
- **How Broadcast Data Reveals Your Identity and Social Graph** – Rolf Winter, 15m
- **Open Measurement of Internet Censorship**– Will Scott, 20m