

Capabilities Updates

draft-ietf-roll-capabilities
ROLL Interim 30th Sep 2020

Changes

- Updates based Dominique's feedback. Thank You Dominique

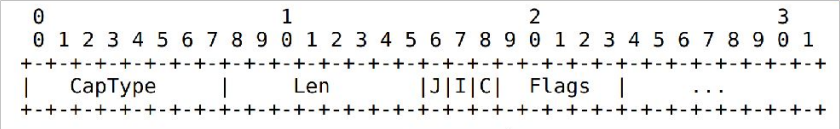
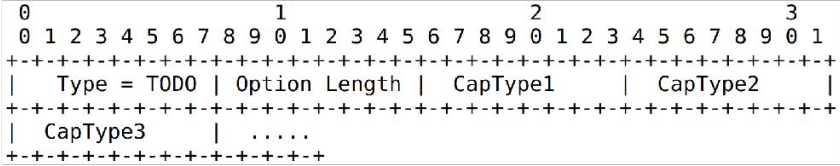
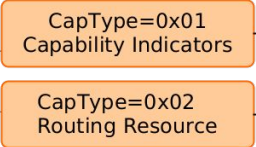
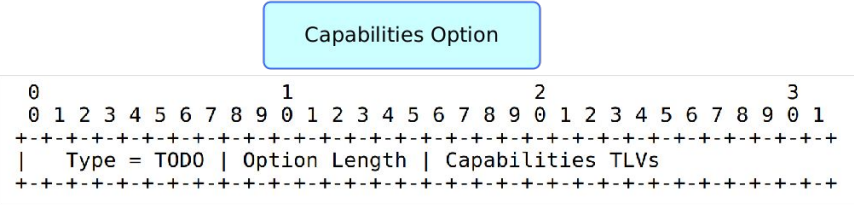
What does the document contain?

- Capability Options that can be carried in any RPL messages
- Two specific capabilities
 - Capability Indicator flags
 - Routing Resource Capability
- Capability Query/Response signalling
- Guidelines for defining new capabilities

MUSTs:

- Handling of Capabilities MUST be supported if the network uses MOPex [I-D.ietf-roll-mopex].

Capability Options



Join as Leaf
if cap not understood

Copy cap
if not understood

Ignore msg if cap
not understood

Capability Query/Response

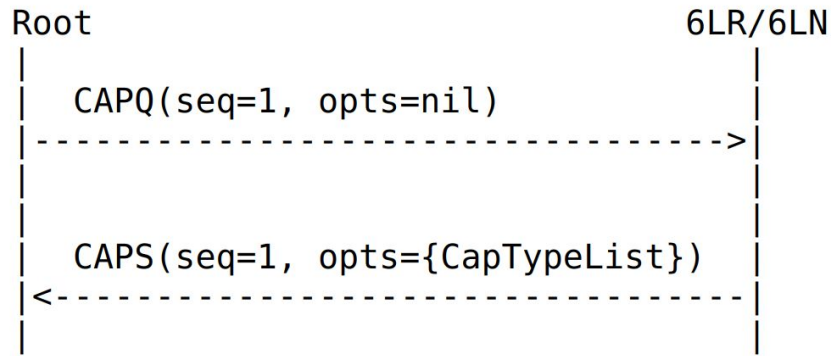


Figure 8: Query supported Cap Types

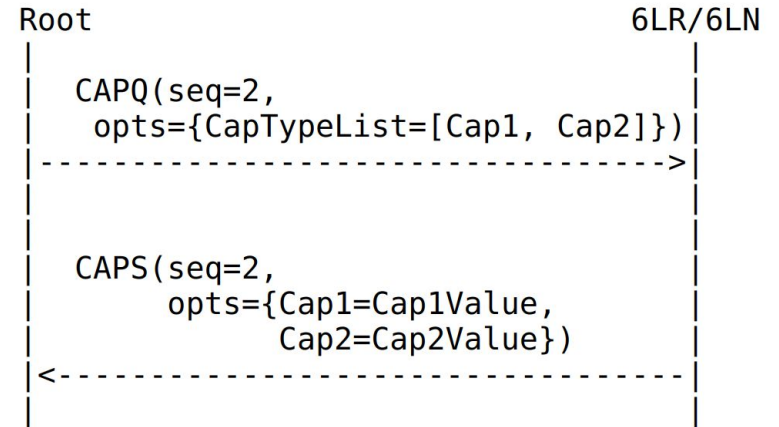


Figure 9: Query specific Cap Set

And the corresponding secure messages.

MOPex Updates

draft-ietf-roll-mopex

Extending RPL Control Options

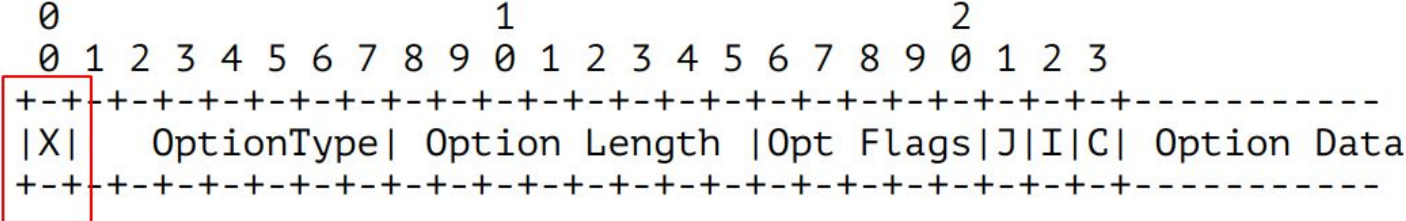


Figure 2: Extended RPL Option Format

- Earlier the location of 'X' bit was second most MSB.
- IANA section is updated to reflect this