



Introduction to IEEE 802

www.ieee802.org

IETF and IEEE 802 leadership meeting

Pat Thaler

IEEE 802 Vice Chair

25 July 2012



Contents

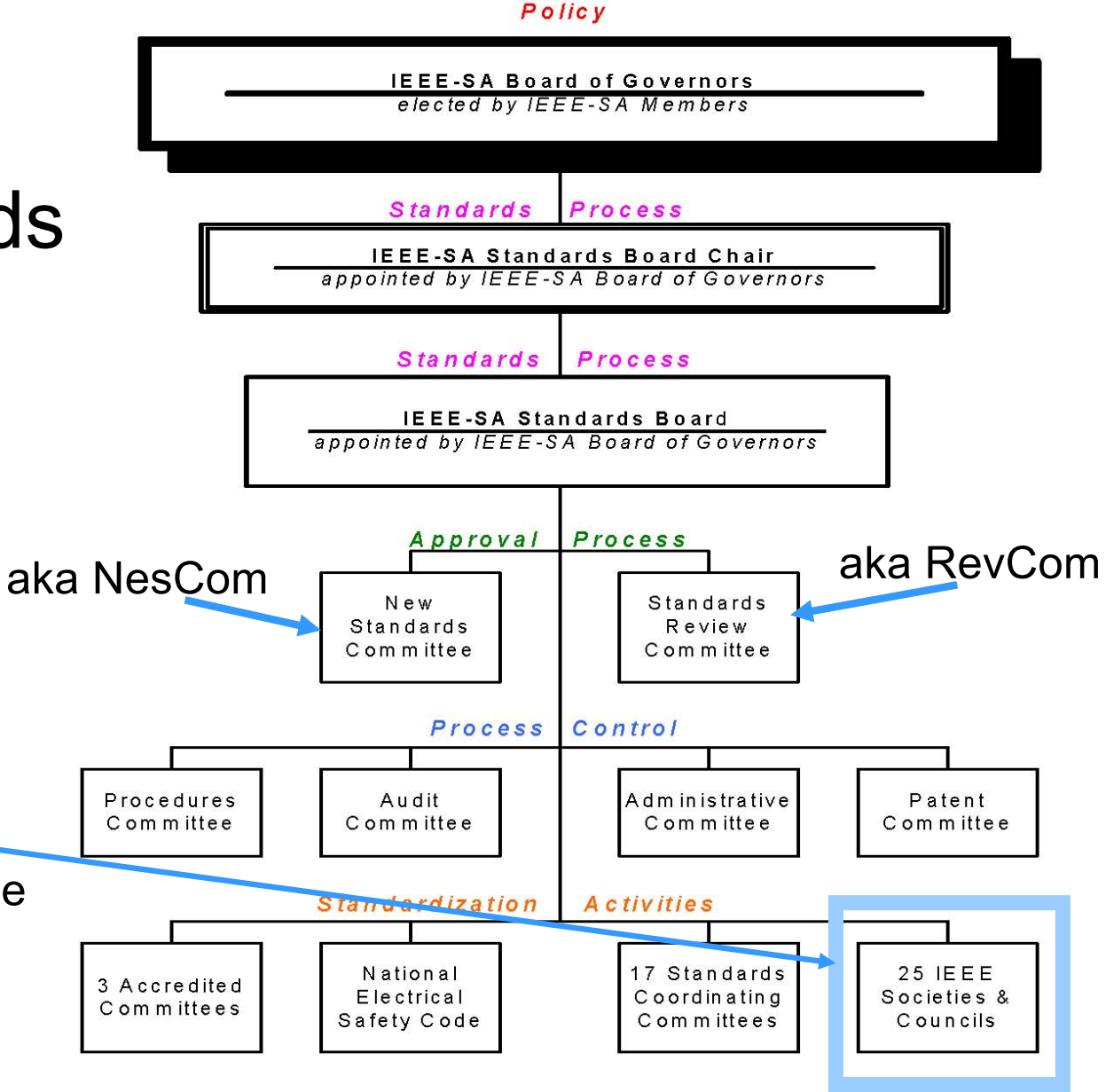
- Introduction to IEEE 802
- Introduction to IEEE 802 standards process



Introduction to IEEE 802



IEEE Standards Organization



IEEE 802 is here:
a standards committee
formed by the
Computer Society



Some terms

- **WG - Working group** – responsible for developing standards in an area – may have multiple active projects.
- **TAG – Technical Advisory Group** – experts on a topic area that crosses working groups – does not produce standards
- **Task group or task force** – a part of a working group which focuses on a particular project or group of projects.



All those dots....decoder ring

802.1 Bridging and Architecture –
generally the top of the link layer

802.3 Ethernet

802.11 Wireless LAN (WLAN)

802.15 – Wireless Personal Area
Network (WPAN)

802.16 Broadband Wireless
Access (BWA)

802.18 Radio Regulatory TAG

802.19 Coexistence

802.21 Media Independent
Handover

802.22 Wireless Regional Area
Networks (WRAN)



IEEE 802 Organization

EXECUTIVE COMMITTEE (EC)

CHAIR
Paul Nikolich

Working Group/TAG Chairs

802.1
BRIDGING/ARCH
Tony Jeffree

802.3
Ethernet
David Law

802.11
WLAN
Bruce Kraemer

802.15
WPAN
Bob Heile

802.16
BWA
Roger Marks

802.18 TAG
Radio Regulatory
Mike Lynch

802.19
Coexistence TAG
Steve Shellhammer

802.21
Media indep.
handover
Subir Das

802.22
WRAN
Apurva Mody

802.24
Smart Grid TAG

Hibernating WG Chairs (non voting)

802.17
Resilent Packet
Ring
John Lemon

802.20
MBWA
Mark Klerer

Appointed Officers

1st VICE CHAIR
Pat Thaler

2nd VICE CHAIR
James Gilb

EXECUTIVE SECY
Jon Rosdahl

RECORDING SECY
John D'Ambrosia

TREASURER
Clint Chaplin

Appointed Officers (non voting)

MEMBER
EMERITUS
Buzz Riggsbee

MEMBER
EMERITUS
Geoff
Thompson

General structure of the week

	Sun	Mon	Tue	Wed	Thu	Fri
A M	Some task forces / task group meetings	<ul style="list-style-type: none"> - Opening EC - 802-newcomer orientation - 802.11-newcomer - Some WG Opening plenaries 	Task force and task group meetings		Task force and task group	WG plenary
P M		<ul style="list-style-type: none"> -Remaining WG opening plenaries -Task force and task group mtgs 			WG plenary or task force or group	Closing EC
E v e		tutorials	TF/TG mtgs	social	WG plenary	

Check WG agendas for details – there is some variation between groups



Introduction to IEEE 802 standards process



Principles of the process

- **Due process** — procedures are publicly available and followed consistently
- **Consensus** — requiring agreement of a majority or supermajority — for technical decisions here = 75%
- **Openness** — ensuring materially interested and affected parties can participate
- **Balance** — representation from all interested parties without overwhelming influence from any one party
- **Right of appeal** — process to ensure due process



Terms

- **PAR – Project Authorization Request**
 - charter for an IEEE standards project
 - similar to IETF charter but authorizes 1 standard/PAR
- **CFI – Call for interest**
 - brief meeting to outline a topic and determine if there is interest in investigating possible project
- **Study Group**
 - group formed to investigate a project and produce a PAR and 5 Criteria
- CFI and Study Group are similar to IETF pre-charter activity
- **Five Criteria**
 - IEEE 802 basis for determining whether to forward a PAR.



IEEE 802 Five Criteria

- **Broad Market Potential**

- Is there a need for this project?

- **Compatibility**

- Does this work fit in IEEE 802 architecture?

- **Distinct Identity**

- Are there already standards or projects in progress that address the need?

- **Technical Feasibility**

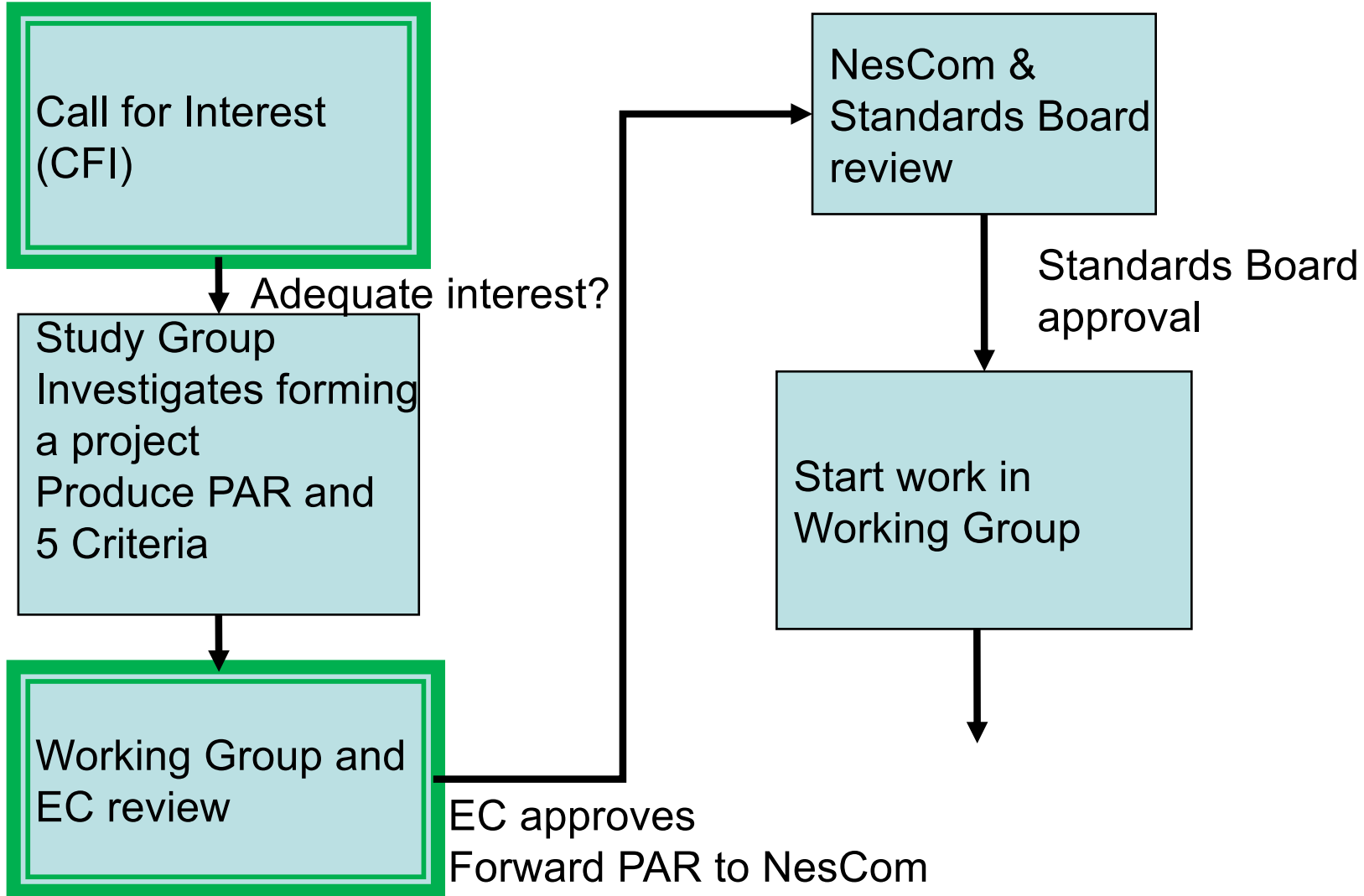
- Can it be implemented?

- **Economic Feasibility**

- Suitable for its intended application?



IEEE 802 standards development life cycle – part 1





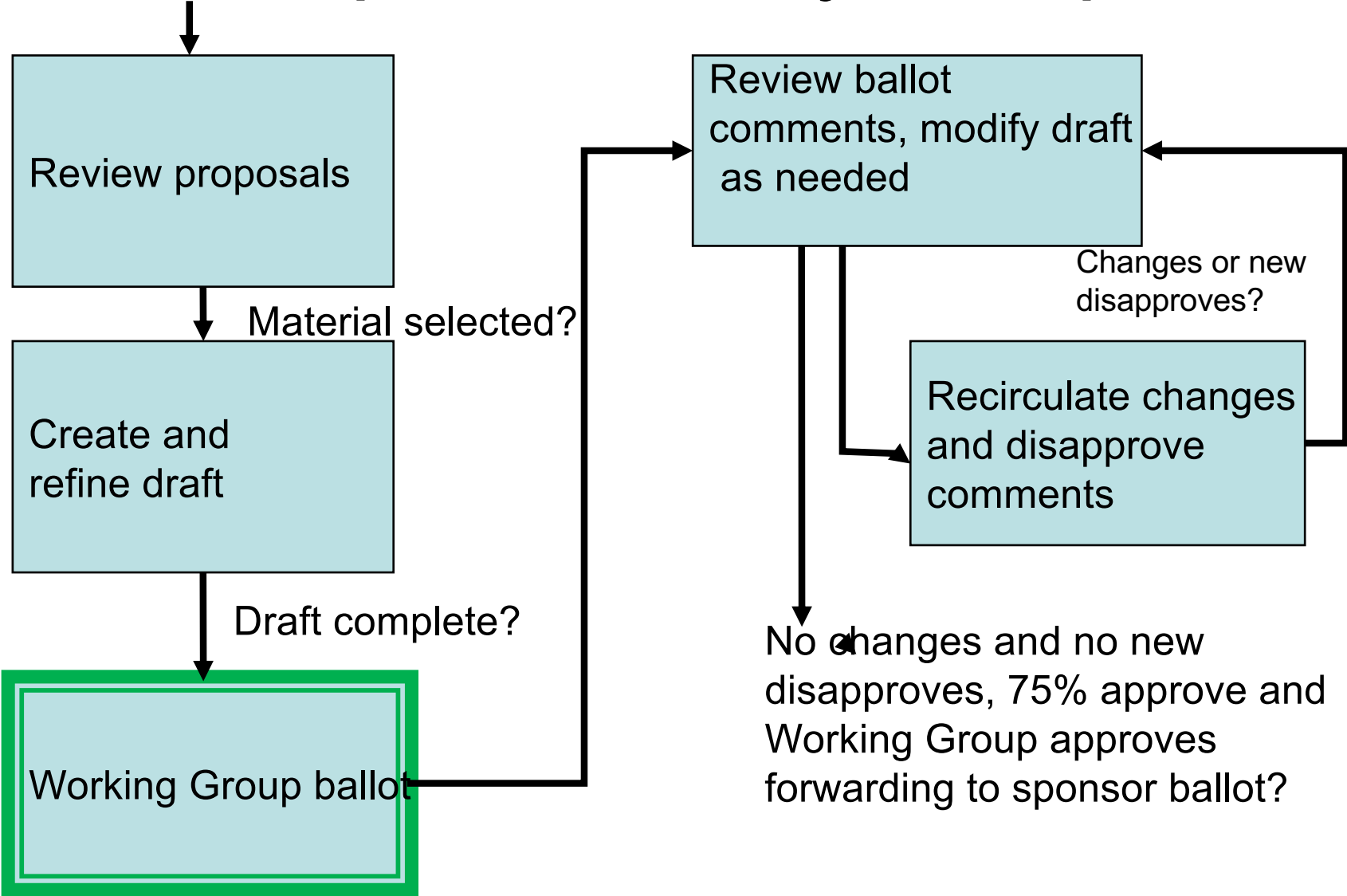
Opportunities for Pre-PAR Input

- Participate in Study Group
- Timeline for consideration of new work* PARs
 - 30 days before plenary – PAR and 5 criteria links sent to EC reflector
 - Links are then posted at <http://www.ieee802.org/PARs.shtml>
 - 5 PM Tuesday of the plenary – comment deadline
 - 5 PM Wednesday of the plenary – comment responses posted
 - EC votes on forwarding the PAR on Friday of the plenary

*Doesn't include projects that introduce no new functionality, e.g. error corrections and revisions to consolidate documents)



IEEE 802 standards development life cycle – part 2



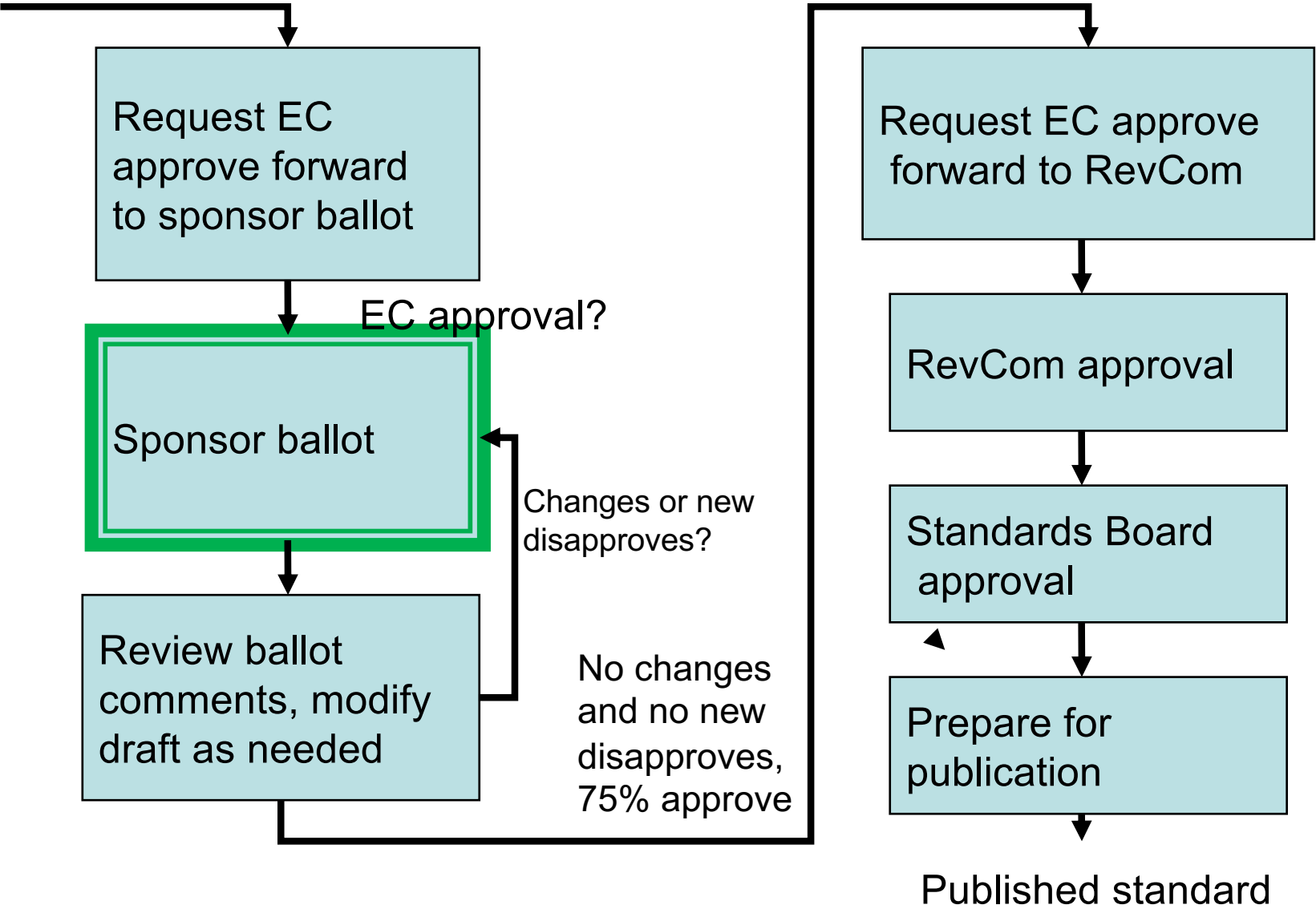


Working Group Ballot

- Drafts are available to Working Group members or through liaison arrangements
- Initial Ballot is open a minimum of 30 days
- Ballot announcements are on WG reflectors
- All comments are responded to regardless of voting status (e.g. voter, observer) of submitter.



IEEE 802 standards development life cycle – part 3





Sponsor Ballot

- Voting on IEEE 802 projects is by individual
- Voter pool is formed before ballot
 - Members of the IEEE Standards Association can join any IEEE 802 sponsor ballot pool
 - Non-members can join by paying per ballot fee
- To be notified of IEEE 802 ballot pool formation
 - go to myProject at <http://development.standards.ieee.org>
 - Manage Activity Profile
 - check the boxes for any WGs or projects of interest under IEEE Computer Society; LAN/MAN Standards Committee
- Comments from those not in the pool can be entered by the WG chair.



After a Standard is completed

- Many IEEE 802 Working Groups have a maintenance process
 - Maintenance request can be entered to fix errors or bugs
 - Shouldn't be used to add features/functionality
 - WG evaluates the request and may
 - Use errata or corrigenda to fix urgent problems
 - Fix in the scope of an existing amendment
 - Fix at next revision
 - Decide no change is necessary



Resources

- IEEE 802 home page:
– <http://www.ieee802.org>
- Links to IEEE and IEEE 802 procedural documents:
– <http://www.ieee802.org/devdocs.shtml>
- Links to IEEE 802 WG and TAG pages:
– <http://www.ieee802.org/dots.shtml>