

# IAB workshop on Environmental Impact of Internet Applications and Systems

## Mobile Networks

Raffaele Bolla, Roberto Bruschi, Franco Davoli,  
Chiara Lombardo, **Beatrice Siccardi**

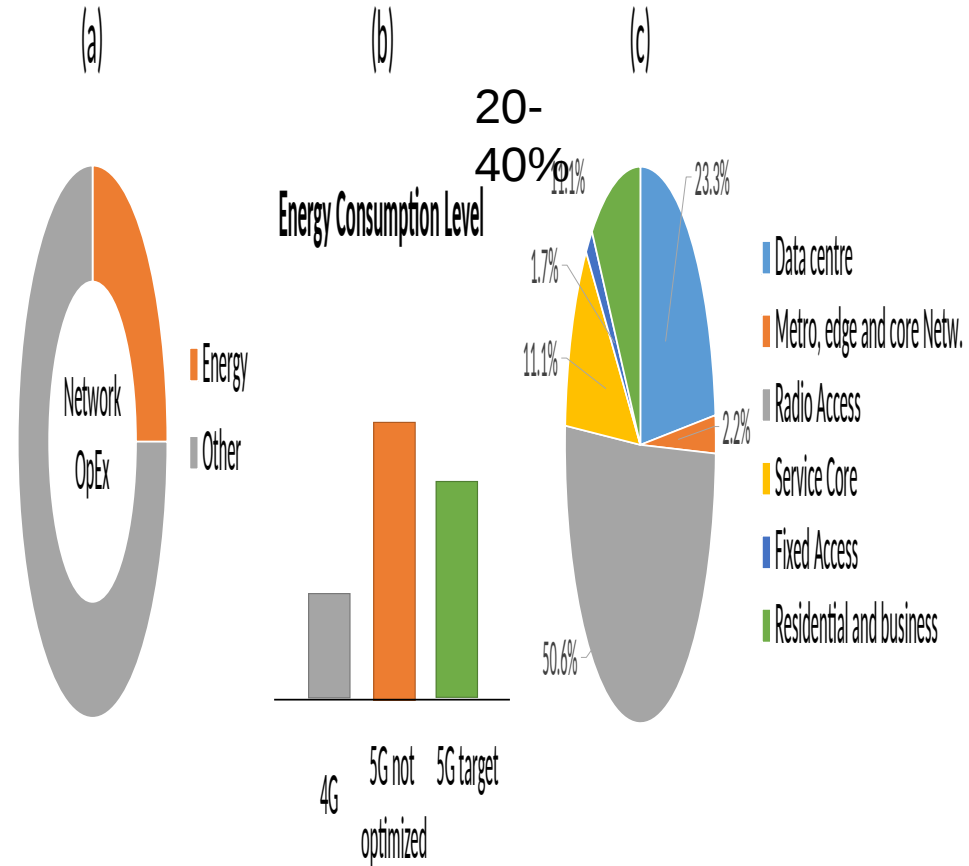


UNIVERSITÀ DEGLI STUDI  
DI GENOVA

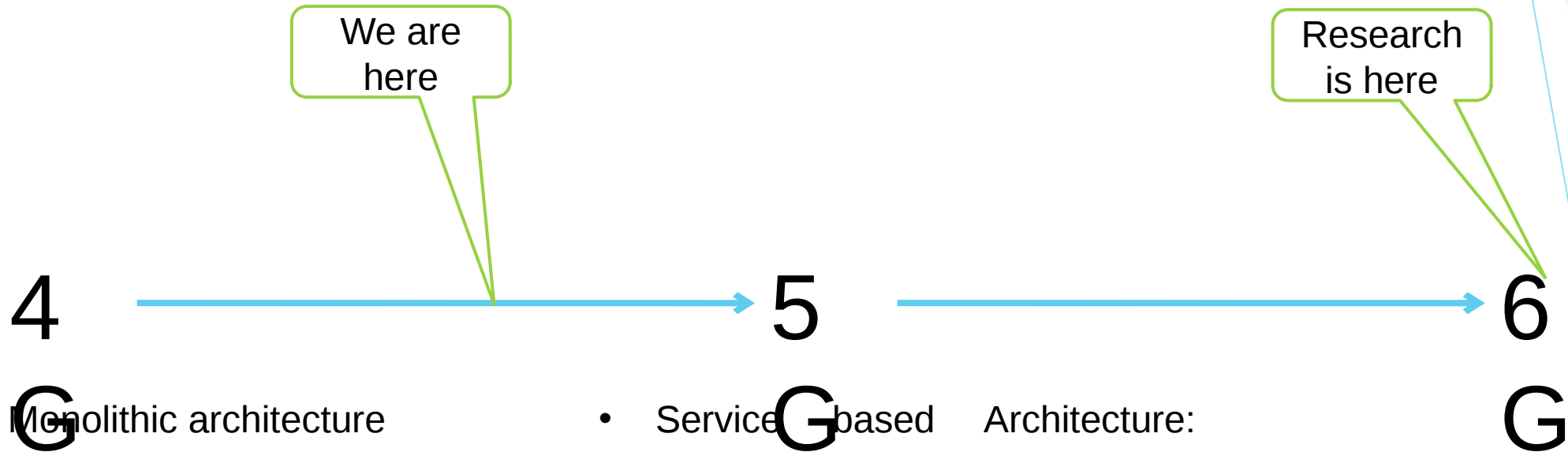
cnit



# Energy consumption of Mobile Networks



# Where are we?

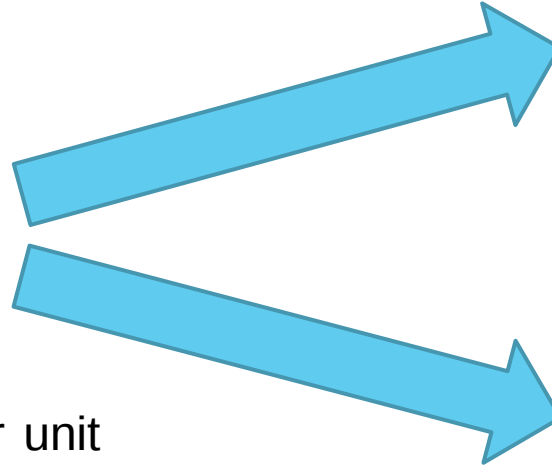


• Monolithic architecture

- Service-based Architecture: NFs.
- Virtualization: NFs are VMs or containers
- Open RAN (split into DUs and CU)
- Edge Computing

# Next steps

Observability



Energy/Carbon-awareness

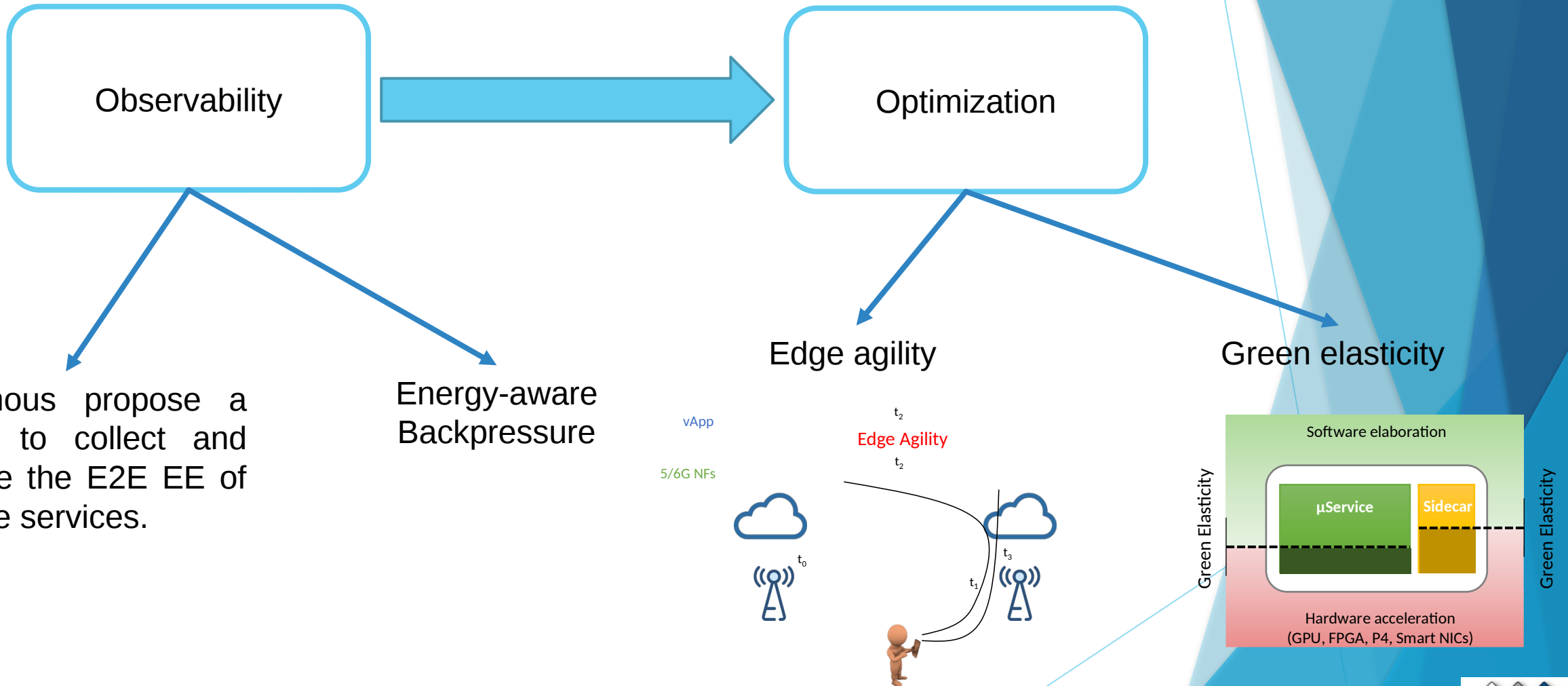
- Economic incentives

Optimization

- Artificial Intelligence

- Which metrics? Energy per unit of traffic (see Anonymous paper)?
- How do we relate energy metrics to individual vertical applications? (see Anonymous paper)

# Proposed solutions



Anonymous propose a method to collect and calculate the E2E EE of the edge services.

Energy-aware Backpressure

Edge agility

Green elasticity

**Thank you for your attention!**

**Any questions?**