

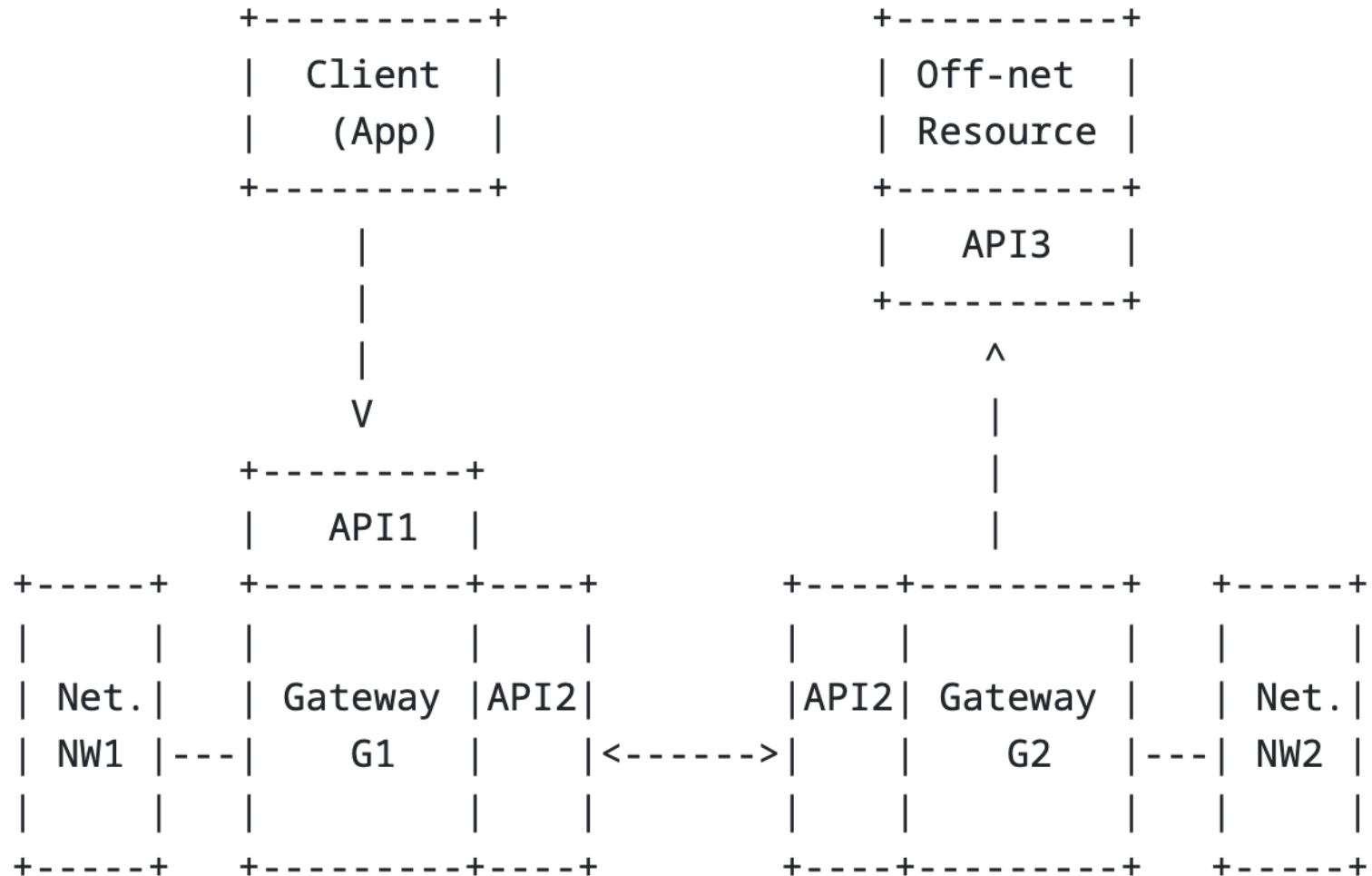
SATP-Core Updates

draft-ietf-satp-core-03

IETF SATP WG Interim Meeting
9 April 2024

Thomas Hardjono, Martin Hargreaves, Rafael Belchior, Alex Chiriac

Renaming the API Types



Focus on Gateway-to-Gateway Flows (API2)

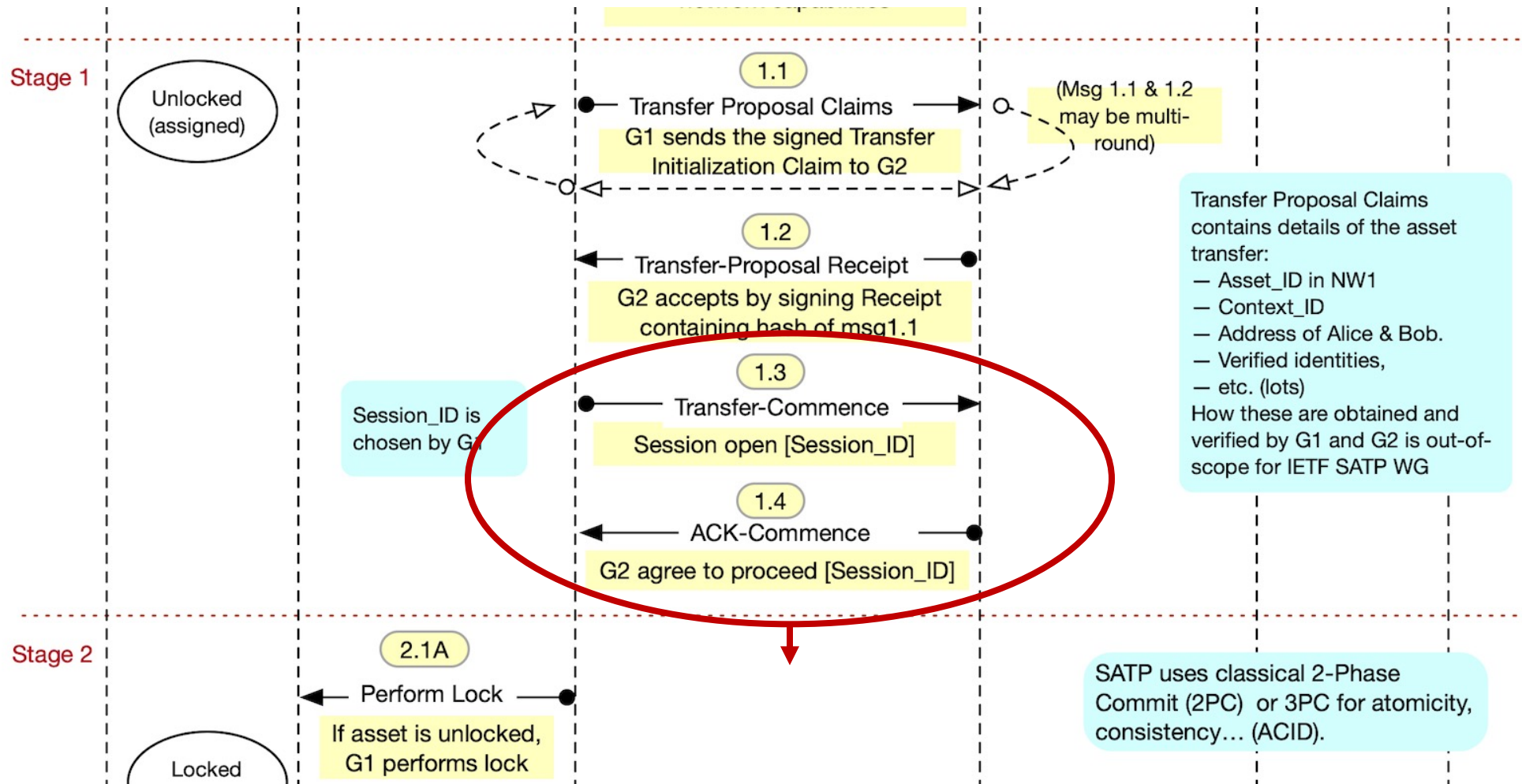
- Discussions on API1 and AI3 moved to Appendix
- API1:
 - For Application interaction with a gateway
 - Relevant for Stage-0 (context establishment App1 & App2)
- API3:
 - For gateway to call-out to remote services
 - Relevant to validate data/attributes in Stage-0

Clarification on Key Types and Purpose

- Gateway signature public key-pair (M):
 - To digitally sign assertions and receipts
- Gateway secure channel establishment public key-pair (M):
 - To establish a secure channel (e.g. TLS) for a transfer session
- Gateway device-identity public key pair (O):
 - Identification the unique hardware device of a gateway.
- Gateway owner-identity public key pair (O):
 - Identification the legal owner (e.g. legal entity).

Other

Transfer Commence & ACK-Commence now part of Stage-2 (for consistency)



Thank You and Q&A

Blank

- Header 1
 - Subheader
- Header 2